

2022

SECO TOOLS PRODUCTIVITY KITS



BUNDLE AND SAVE

SECO



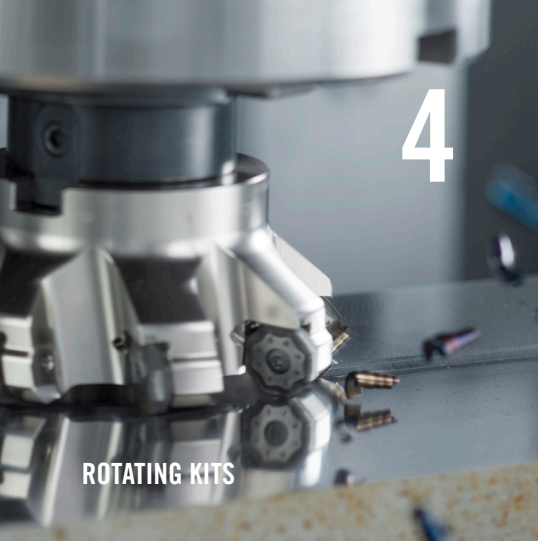
**PRODUCTIVITY
KITS FOR EVERY
APPLICATION**

SAVE ON INVENTORY COSTS GET PRODUCTIVITY KITS FROM SECO TOOLS

Save on the tools you use most with these economical Productivity Kits! We have hand selected our most popular end mills, milling cutters, turning tools, and drill bodies with a pack of our best-selling inserts to give you the most aggressive discounts possible. Get unbeatably low prices for the tools you know and trust.

To find an authorized Seco Distributor near you,
please visit SECOLocator.COM





4

ROTATING KITS



23

DRILLING / HOLEMAKING KITS



SECO TOOLS PRODUCTIVITY KITS

WHAT'S INSIDE



13

SOLID END MILLING KITS



17

STATIONARY KITS

LOOK INSIDE

SQUARE SHOULDER MILLING

Square T4	5
Square 6™	6
Turbo 6 & 10	7
Turbo 12 & 16	8
Double Turbo 16.....	9

FACE MILLING

Double Quattromill™ 14.....	10
Quattromill™ 09 & 12	11

HIGH FEED MILLING

High Feed 2, 4, & 6.....	12
--------------------------	----

SOILD END MILLING - NIAGARA CUTTER™

Stabilizer™ 2.0.....	14
C430 Series	15
Elite A245/A345 Series.....	16

TURNING

Duratomic® - Steel.....	18
Jetstream Tooling® Duo	
Superalloys	19

MDT, GROOVING & CUT-OFF

MDT & X4	20
150.10.....	21

THREADING

Internal & External.....	22
--------------------------	----

DRILLING/HOLEMAKING

Perfomax®.....	24
Feedmax™ -P.....	25
Crownloc® Plus.....	26

BUNDLE & SAVE

Increase your productivity in square shoulder or face milling applications and various materials with rotating kits from Seco Tools.

For a full product range, see our Indexable Milling Machining Navigator or visit: SECOTOOLS.COM



SQUARE SHOULDER & FACE MILLING ROTATING KITS



SECO 



SQUARE SHOULDER MILLING

SQUARE T4 KITS

MAXIMIZE YOUR MILLING SECURITY

The **Square T4** system is a series of square shoulder mills with a tangentially mounted insert offering 4 cutting edges on a 90° square shoulder mill. The tangential insert mounting method provides the strength and stability needed to elevate feed rates.



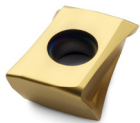
R217/220.94-12 CUTTERS & LOEX INSERTS - MAX DEPTH OF CUT 0.500"

	ITEM NUMBER	KIT DESCRIPTION	KIT CONTENTS				KIT PRICE (USD)	KIT PRICE (CAD)	
			CUTTER	DIA	BORE	SHANK			INSERT (10 PCS.)
P	03068274	SQUARET4-12 01.00P KIT	R217.94-01.00-3-12-2A	1.00	-	1.00	LOEX 120708TR-M12 MP2501	\$509	\$642
	03068275	SQUARET4-12 01.25P KIT	R217.94-01.25-3-12-3A	1.25	-	1.25	LOEX 120708TR-M12 MP2501	\$530	\$672
	03068276	SQUARET4-12 01.50P KIT	R220.94-01.50-12-4A	1.50	0.50	-	LOEX 120708TR-M12 MP2501	\$598	\$754
M	03068277	SQUARET4-12 02.00P KIT	R220.94-02.00-12-5A	2.00	0.75	-	LOEX 120708TR-M12 MP2501	\$666	\$843
	03068287	SQUARET4-12 01.25M KIT	R217.94-01.25-3-12-3A	1.25	-	1.25	LOEX 120708TR-M12 F40M	\$530	\$672
	03068288	SQUARET4-12 01.50M KIT	R220.94-01.50-12-4A	1.50	0.50	-	LOEX 120708TR-M12 F40M	\$598	\$754
	03068289	SQUARET4-12 02.00M KIT	R220.94-02.00-12-5A	2.00	0.75	-	LOEX 120708TR-M12 F40M	\$666	\$843

Kits include one cutter body, ten inserts, and a wrench

FEATURED GRADES

- MP2501
- F40M





SQUARE SHOULDER MILLING

SQUARE 6™ KITS

INCREASE PRODUCTIVITY & COST EFFICIENCY WITH SIX-SIDED INSERTS

The **Square 6** system is a series of square shoulder mills that utilizes a trigon shaped insert offering 6 cutting edges on a 90° square shoulder mill. With six cutting edges, Square 6 is a cost-effective tool for square shoulder milling, face milling and plunging.

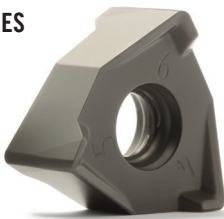
R217/220.96-08 CUTTERS & XNEX INSERTS - MAX DEPTH OF CUT 0.295"

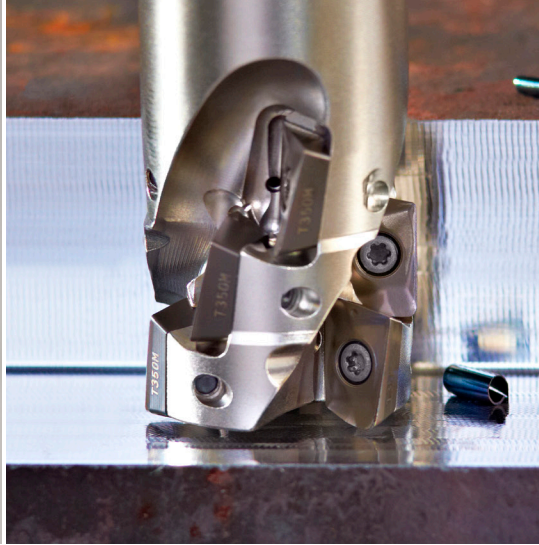
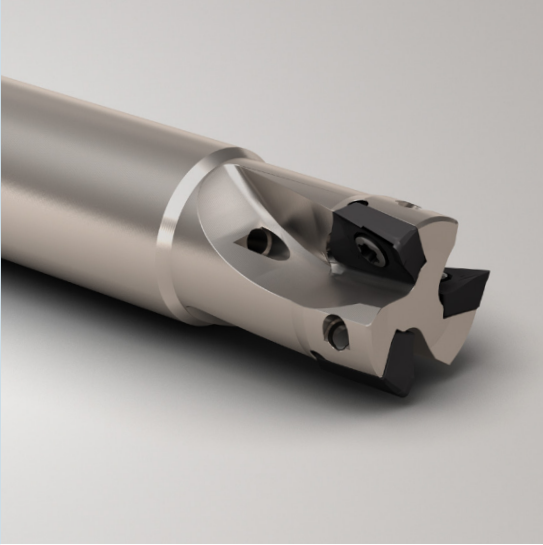
	ITEM NUMBER	KIT DESCRIPTION	KIT CONTENTS				KIT PRICE (USD)	KIT PRICE (CAD)	
			CUTTER	DIA	BORE	SHANK			INSERT (10 PCS.)
P	02693015	SQUARE6-08 1.5P KIT	R217.96-01.50-3-08-3A	1.500	-	1.250	XNEX 080608TR-M13 MP2501	\$497	\$631
	02693016	SQUARE6-08 2.0P KIT	R220.96-02.00-08-5A	2.000	0.750	-	XNEX 080608TR-M13 MP2501	\$565	\$713
	02693018	SQUARE6-08 3.0P KIT	R220.96-03.00-08-7A	3.000	1.000	-	XNEX 080608TR-M13 MP2501	\$751	\$947
	02693019	SQUARE6-08 4.0P KIT	R220.96-04.00-08-8A	4.000	1.000	-	XNEX 080608TR-M13 MP2501	\$847	\$1,080
M	02693020	SQUARE6-08 1.5M KIT	R217.96-01.50-3-08-3A	1.500	-	1.250	XNEX 080608R-M08 F40M	\$497	\$631
	02693021	SQUARE6-08 2.0M KIT	R220.96-02.00-08-5A	2.000	0.750	-	XNEX 080608R-M08 F40M	\$565	\$713
	02693023	SQUARE6-08 3.0M KIT	R220.96-03.00-08-7A	3.000	1.000	-	XNEX 080608R-M08 F40M	\$751	\$947
	02693024	SQUARE6-08 4.0M KIT	R220.96-04.00-08-8A	4.000	1.000	-	XNEX 080608R-M08 F40M	\$847	\$1,080

Kits include one cutter body, ten inserts, and a wrench

FEATURED GRADES

- MP2501
- F40M





SQUARE SHOULDER MILLING

TURBO 6 & 10 KITS

PEAK PERFORMANCE IN LIGHT TO MEDIUM-DUTY OPERATIONS

Optimize your cutting properties with Seco's Turbo family of cutters that reduce heat generation and cutting forces. These cutters are available in a variety of configurations, all with copy milled pockets for insert stability and two pitch configurations to tackle almost every material. For small diameter square shoulder milling, **Turbo 6** will meet your needs, while the **Turbo 10** is your answer for light-duty high-precision applications. Both solutions can perform multiple milling functions, including ramping and helical interpolation.



R220.69-06 CUTTERS & XOMX INSERTS - MAX PROFILING DEPTH OF CUT 0.197"

	ITEM NUMBER	KIT DESCRIPTION	KIT CONTENTS				KIT PRICE (USD)	KIT PRICE (CAD)
			CUTTER	DIA	SHANK	INSERT (10 PCS.)		
P	02504118	TURBO6 .375P KIT	R217.69-00.375-0-06-2AN	0.750	0.375	XOMX 060208R-M05 F40M	\$300	\$376
	02504119	TURBO6 .500P KIT	R217.69-00.500-0-06-3AN	0.500	0.500	XOMX 060208R-M05 F40M	\$311	\$395
	02504120	TURBO6 .625P KIT	R217.69-00.625-0-06-4AN	0.625	0.625	XOMX 060208R-M05 F40M	\$367	\$465
	02504121	TURBO6 .750P KIT	R217.69-00.75-0-06-5AN	0.750	0.750	XOMX 060208R-M05 F40M	\$362	\$460

R217.69-10 CUTTERS & XOMX/XOEX INSERTS - MAX PROFILING DEPTH OF CUT 0.354"

	ITEM NUMBER	KIT DESCRIPTION	KIT CONTENTS				KIT PRICE (USD)	KIT PRICE (CAD)
			CUTTER	DIA	SHANK	INSERT (10 PCS.)		
P	02840165	TURBO10 .625P KIT	R217.69-00.625-3-10-2A	0.625	0.625	XOMX 10T308TR-M09 MP2501	\$356	\$448
	02840166	TURBO10 .750P KIT	R217.69-00.750-3-10-2A	0.750	0.750	XOMX 10T308TR-M09 MP2501	\$367	\$465
	02840167	TURBO10 1.00P KIT	R217.69-01.00-3-10-4A	1.000	1.000	XOMX 10T308TR-M09 MP2501	\$407	\$513
M	02840170	TURBO10 .625M KIT	R217.69-00.625-3-10-2A	0.625	0.625	XOEX 10T308R-M06 F40M	\$379	\$478
	02840171	TURBO10 .750M KIT	R217.69-00.750-3-10-2A	0.750	0.750	XOEX 10T308R-M06 F40M	\$396	\$500
	02840172	TURBO10 1.00M KIT	R217.69-01.00-3-10-4A	1.000	1.000	XOEX 10T308R-M06 F40M	\$430	\$542

Kits include one cutter body, ten inserts, and a wrench

FEATURED GRADES

- MP2501
- F40M



SQUARE SHOULDER MILLING

TURBO 12 & 16 KITS



HIGH PERFORMANCE MILLING IN LARGER DEPTH APPLICATIONS

Turbo 12 is the first-choice cutter for general-purpose square shoulder milling applications. The Turbo 12 is ideal in all applications from low carbon steels to high-temp alloys.

Reduce your power consumption, improve wall quality, get higher performance in sticky materials and increase ramp angles with the latest insert and pocket design of the **Turbo 16** cutters.



R217/220.69-12 CUTTERS & XOMX/XOEX INSERTS - MAX PROFILING DEPTH OF CUT 0.433"

	ITEM NUMBER	KIT DESCRIPTION	KIT CONTENTS					KIT PRICE (USD)	KIT PRICE (CAD)
			CUTTER	DIA	BORE	SHANK	INSERT (10 PCS.)		
P	02628260	TURBO 12 .750P KIT	R217.69-00.75-3-12-2AN	0.750	-	0.750	XOMX 120408TR-M12 MP2501	\$374	\$472
	02628263	TURBO 12 1.00P KIT	R217.69-01.00-3-12-3AN	1.000	-	1.000	XOMX 120408TR-M12 MP2501	\$396	\$500
	02628266	TURBO 12 1.25P KIT	R217.69-01.25-3-12-4AN	1.250	-	1.250	XOMX 120408TR-M12 MP2501	\$401	\$506
M	03019949	TURBO 12 1.50P KIT	R220.69-01.50-12-4AN	1.500	-	1.500	XOMX 120408TR-M12 MP2501	\$464	\$582
	02628261	TURBO 12 .750M KIT	R217.69-00.75-3-12-2AN	0.750	-	0.750	XOEX 120408R-M07 F40M	\$418	\$530
	02628264	TURBO 12 1.00M KIT	R217.69-01.00-3-12-3AN	1.000	-	1.000	XOEX 120408R-M07 F40M	\$423	\$536
	02628267	TURBO 12 1.25M KIT	R217.69-01.25-3-12-4AN	1.250	-	1.250	XOEX 120408R-M07 F40M	\$430	\$542
	03019952	TURBO 12 1.50M KIT	R220.69-01.50-12-4AN	1.500	-	1.500	XOEX 120408R-M07 F40M	\$491	\$618

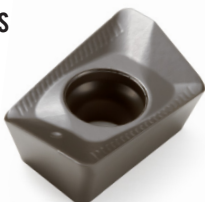
Kits include one cutter body, ten inserts, and a wrench

R217/220.69-16 CUTTERS & XOMX INSERTS - MAX PROFILING DEPTH OF CUT = 0.491"

ITEM NUMBER	KIT DESCRIPTION	KIT CONTENTS					KIT PRICE (USD)	KIT PRICE (CAD)
		CUTTER	DIA	BORE	SHANK	INSERT (10 PCS.)		
10084223	TURBO 16 1.00P KIT	R217.69-01.00-3-X016-2A	1.00	-	1.00	XOMX160508TR-M13 MP2501	\$453	\$538
10084224	TURBO 16 1.25P KIT	R217.69-01.25-3-X016-3A	1.25	-	1.25	XOMX160508TR-M13 MP2501	\$474	\$564
10084225	TURBO 16 1.50P KIT	R217.69-01.50-3-X016-3A	1.50	-	1.50	XOMX160508TR-M13 MP2501	\$489	\$579
10084226	TURBO 16 2.00P KIT	R220.69-02.00-X016-5A	2.00	0.75	-	XOMX160508TR-M13 MP2501	\$613	\$724
10084227	TURBO 16 2.50P KIT	R220.69-02.50-X016-5A	2.50	0.75	-	XOMX160508TR-M13 MP2501	\$670	\$791
10084228	TURBO 16 3.00P KIT	R220.69-03.00-X016-6A	3.00	1.00	-	XOMX160508TR-M13 MP2501	\$757	\$894
10084229	TURBO 16 1.00M KIT	R217.69-01.00-3-X016-2A	1.00	-	1.00	XOMX160508TR-ME11 F40M	\$448	\$533
10084230	TURBO 16 1.25M KIT	R217.69-01.25-3-X016-3A	1.25	-	1.25	XOMX160508TR-ME11 F40M	\$469	\$553
10084231	TURBO 16 1.50M KIT	R217.69-01.50-3-X016-3A	1.50	-	1.50	XOMX160508TR-ME11 F40M	\$484	\$574
10084232	TURBO 16 2.00M KIT	R220.69-02.00-X016-5A	2.00	0.75	-	XOMX160508TR-ME11 F40M	\$608	\$719
10084233	TURBO 16 2.50M KIT	R220.69-02.50-X016-5A	2.50	0.75	-	XOMX160508TR-ME11 F40M	\$664	\$786
10084234	TURBO 16 3.00M KIT	R220.69-03.00-X016-6A	3.00	1.00	-	XOMX160508TR-ME11 F40M	\$747	\$884

FEATURED GRADES

- MP2501
- F40M





DOUBLE THE EDGES FOR IMPROVED PRODUCTIVITY

Achieve significant cost per edge savings with the 4 cutting edges of the double-sided Turbo. Use the most positive helix cutting angle geometry on the market for lower power consumption, smoother cutting and longer tool life. Together with high 90° angle accuracy and double-sided inserts, this generates a good surface finish and optimizes costs.

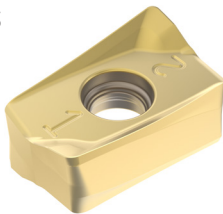
With precise geometry, the **Double Turbo 16** insert provides efficient chip evacuation and significantly reduces the generation of workpiece burrs, especially in steel, stainless steel, and titanium part applications. The insert cuts with less force so vibrations are minimized leading to extended tool life and smoother surface finish.

R217/R220.64-16 CUTTERS & ZOMX INSERTS - MAX PROFILING DEPTH OF CUT = 0.591"

ITEM NUMBER	KIT DESCRIPTION	KIT CONTENTS					KIT PRICE (USD)	KIT PRICE (CAD)
		CUTTER	DIA	BORE	SHANK	INSERT (10 PCS.)		
10083600	DBLETURBO 16 1.25P KIT	R217.64-01.25-3-Z016-2A	1.25	-	1.25	ZOMX160708TR-M12, MP2501	\$536	\$636
10015595	DBLETURBO 16 1.50P KIT	R217.64-01.50-3-Z016-3A	1.50	-	1.50	ZOMX160708TR-M12, MP2501	\$577	\$682
10015596	DBLETURBO 16 2.00P KIT	R220.64-02.00-Z016-4A	2.00	0.75	-	ZOMX160708TR-M12, MP2501	\$685	\$812
10015604	DBLETURBO 16 2.50P KIT	R220.64-02.50-Z016-5A	2.50	0.75	-	ZOMX160708TR-M12, MP2501	\$767	\$910
10015597	DBLETURBO 16 3.00P KIT	R220.64-03.00-Z016-6A	3.00	1.00	-	ZOMX160708TR-M12, MP2501	\$855	\$1,010
10083604	DBLETURBO 16 1.25M KIT	R217.64-01.25-3-Z016-2A	1.25	-	1.25	ZOMX160708TR-ME10, F40M	\$525	\$620
10015599	DBLETURBO 16 1.50M KIT	R217.64-01.50-3-Z016-3A	1.50	-	1.50	ZOMX160708TR-ME10, F40M	\$572	\$677
10015600	DBLETURBO 16 2.00M KIT	R220.64-02.00-Z016-4A	2.00	0.75	-	ZOMX160708TR-ME10, F40M	\$680	\$807
10015601	DBLETURBO 16 2.50M KIT	R220.64-02.50-Z016-5A	2.50	0.75	-	ZOMX160708TR-ME10, F40M	\$757	\$894
10015602	DBLETURBO 16 3.00M KIT	R220.64-03.00-Z016-6A	3.00	1.00	-	ZOMX160708TR-ME10, F40M	\$850	\$1,010

FEATURED GRADES

- MP2501
- F40M





REDUCE CUTTING FORCES & INCREASE DEPTH OF CUT

Maximize machine output and gain lower cost per cutting edge thanks to the double-sided, eight-edged inserts of the **Double Quattromill 14** face milling cutter. The specially developed and extremely free-cutting insert geometries lower cutting forces and require less machine power while also ensuring workpiece stability. Simplify processes and reduce inventory with these cost-effective double-sided inserts.



R220.54 CUTTERS & SNMX INSERTS - MAX DEPTH OF CUT 0.236"

	ITEM NUMBER	KIT DESCRIPTION	KIT CONTENTS				KIT PRICE (USD)	KIT PRICE (CAD)
			CUTTER	DIA	ARBOR	INSERTS (10 PCS)		
P	03273426	DQ14 2.00P KIT	R220.54-02.00-14-4A	2.00	0.75	SNMX 1407ANTR-M10, MP2501	\$710	\$926
	03273427	DQ14 2.50P KIT	R220.54-02.50-14-5A	2.50	0.75	SNMX 1407ANTR-M10, MP2501	\$808	\$1,050
	03273428	DQ14 3.00P KIT	R220.54-03.00-14-6A	3.00	1.00	SNMX 1407ANTR-M10, MP2501	\$895	\$1,170
	03273429	DQ14 4.00P KIT	R220.54-04.00-14-7A	4.00	1.50	SNMX 1407ANTR-M10, MP2501	\$1,050	\$1,380
M	03273431	DQ14 2.00M KIT	R220.54-02.00-14-4A	2.00	0.75	SNMX 1407ANTR-M10, F40M	\$710	\$926
	03273432	DQ14 2.50M KIT	R220.54-02.50-14-5A	2.50	0.75	SNMX 1407ANTR-M10, F40M	\$808	\$1,050
	03273433	DQ14 3.00M KIT	R220.54-03.00-14-6A	3.00	1.00	SNMX 1407ANTR-M10, F40M	\$895	\$1,170
	03273434	DQ14 4.00M KIT	R220.54-04.00-14-7A	4.00	1.50	SNMX 1407ANTR-M10, F40M	\$1,050	\$1,380

Kit includes one cutter body, ten inserts, and a wrench

FEATURED GRADES

- MP2501
- F40M





ENJOY FREE CUTTING CAPABILITY IN ALL MATERIALS

Excel in any machining conditions with the **Quattromill 09 & 12**. It's free cutting design and wide range of inserts create excellent surface finished in all workpiece materials. All Quattromill cutter bodies are coated for longer tool life, and their strong, square inserts are easy to index. The Quattromill 09 diameter range begins at 1.50" and is ideal for precision machining on light duty machines. Quattromill 12 increases depth of cut due to insert size for higher feed and metal removal rates.



R220.53-09 CUTTERS & SEMX/SEEX INSERTS - MAX DEPTH OF CUT 0.18"

	ITEM NUMBER	KIT DESCRIPTION	KIT CONTENTS				KIT PRICE (USD)	KIT PRICE (CAD)
			CUTTER	DIA	BORE	INSERT (10 PCS.)		
P	02628712	QUATTRO-09 1.50P KIT	R220.53-01.50-09-4A	1.50	0.75	SEMX 09T3AFN-M08 MP2501	\$497	\$619
	02628713	QUATTRO-09 2.00P KIT	R220.53-02.00-09-5A	2.00	0.75	SEMX 09T3AFN-M08 MP2501	\$519	\$647
M	02628717	QUATTRO-09 1.50M KIT	R220.53-01.50-09-4A	1.50	0.75	SEEX 09T3AFN-M05 F40M	\$514	\$636
	02628718	QUATTRO-09 2.00M KIT	R220.53-02.00-09-5A	2.00	0.75	SEEX 09T3AFN-M05 F40M	\$538	\$665

R220.53-12 CUTTERS & SEMX/SEEX INSERTS - MAX DEPTH OF CUT 0.236"

	ITEM NUMBER	KIT DESCRIPTION	KIT CONTENTS				KIT PRICE (USD)	KIT PRICE (CAD)
			CUTTER	DIA	BORE	INSERT (10 PCS.)		
P	02629027	QUATTRO-12 2.00P KIT	R220.53-02.00-12-4A	2.00	0.75	SEMX 1204AFN-M15 MP2501	\$587	\$728
	02629031	QUATTRO-12 3.00P KIT	R220.53-03.00-12-6A	3.00	1.00	SEMX 1204AFN-M15 MP2501	\$734	\$914
M	02629035	QUATTRO-12 2.00M KIT	R220.53-02.00-12-4A	2.00	0.75	SEEX 1204AFN-M08 F40M	\$616	\$763
	02629039	QUATTRO-12 3.00M KIT	R220.53-03.00-12-6A	3.00	1.00	SEEX 1204AFN-M08 F40M	\$763	\$948

Kits include one cutter body, ten inserts, and a wrench

FEATURED GRADES

- MP2501
- F40M





FACE MILLING

HIGH FEED 2, 4, & 6 KITS

GAIN IMPROVED ECONOMY IN HIGH FEED MILLING

Machine up to three times faster than conventional methods. Pairing shallow depth of cut with high feed per tooth increases metal removal rates resulting in more parts being machined. The **High Feed 2** comes in two insert sizes and is single sided. The diameter range begins as small as 0.500" and is excellent in all materials. The **High Feed 4** offers four cutting edges which provides an economical solution while still offering a robust way to machine fast. This diameter range begins at 1.00". The **High Feed 6** range offers an economical double-sided insert with 6 cutting edges and can handle up to 0.070" axial depth of cut for incomparable material removal and low operating costs. The diameter range begins at 2.00".

FEATURED GRADES

- MP2501
- F40M



HIGH FEED 2

	ITEM NUMBER	KIT DESCRIPTION	KIT CONTENTS					KIT PRICE (USD)	KIT PRICE (CAD)
			CUTTER	DIA	BORE	SHANK	INSERT (10 PCS.)		
P	02874480	HIGHFEED2 .625P KIT	R217.21-0.625.0-LP06.2A	0.625	-	0.625	LPHW 060310TR-MD07 MP2501	\$328	\$408
	02874481	HIGHFEED2 .750P KIT	R217.21-0.75.0-LP06.2A	0.750	-	0.750	LPHW 060310TR-MD07 MP2501	\$340	\$427
	02874482	HIGHFEED2 1.00P KIT	R217.21-1.00.0-LP06.3A	1.000	-	1.000	LPHW 060310TR-MD07 MP2501	\$374	\$467
M	02874483	HIGHFEED2 .625M KIT	R217.21-0.625.0-LP06.2A	0.625	-	0.625	LPHT 060310TR-M06 F40M	\$328	\$408
	02874484	HIGHFEED2 .750M KIT	R217.21-0.75.0-LP06.2A	0.750	-	0.750	LPHT 060310TR-M06 F40M	\$340	\$427
	02874516	HIGHFEED2 1.00M KIT	R217.21-1.00.0-LP06.3A	1.000	-	1.000	LPHT 060310TR-M06 F40M	\$374	\$467

HIGH FEED 4

	ITEM NUMBER	KIT DESCRIPTION	KIT CONTENTS					KIT PRICE (USD)	KIT PRICE (CAD)
			CUTTER	DIA	BORE	SHANK	INSERT (10 PCS.)		
P	03019976	HIGHFEED4 1.00P KIT	R217.21-1.00.0-L006-3A	1.000	-	1.000	LOHT 060310TR-M07 MP2501	\$430	\$537
	03019982	HIGHFEED4 2.00P KIT	R220.21-02.00-L006-8A	2.000	0.750	-	LOHT 060310TR-M07 MP2501	\$565	\$706
M	03019985	HIGHFEED4 1.00M KIT	R217.21-1.00.0-L006-3A	1.000	-	1.000	LOHT 060310TR-ME06 F40M	\$430	\$537
	03019988	HIGHFEED4 2.00M KIT	R220.21-02.00-L006-8A	2.000	0.750	-	LOHT 060310TR-ME06 F40M	\$565	\$706

HIGH FEED 6

	ITEM NUMBER	KIT DESCRIPTION	KIT CONTENTS					KIT PRICE (USD)	KIT PRICE (CAD)
			CUTTER	DIA	BORE	SHANK	INSERT (10 PCS.)		
P	03112750	HIGHFEED6 2.00P KIT	R220.21-02.00-R230-4A	2.00	0.75	218.21-230TR-06-M15	MP2501	\$577	\$678
	03112752	HIGHFEED6 3.00P KIT	R220.21-03.00-R230-5A	3.00	1.00	218.21-230TR-06-M15	MP2501	\$712	\$841
M	03112754	HIGHFEED6 2.00M KIT	R220.21-02.00-R230-4A	2.00	0.75	218.21-230TR-06-ME13	F40M	\$577	\$678
	03112756	HIGHFEED6 3.00M KIT	R220.21-03.00-R230-5A	3.00	1.00	218.21-230TR-06-ME13	F40M	\$712	\$841

Kits include one cutter body, ten inserts, and a wrench



BUNDLE & SAVE

Increase your productivity in various solid end milling applications and materials with Niagara Cutter's solid end milling kits.

For a full product range visit:
NIAGARACUTTER.COM

NIAGARA CUTTER™ SOLID END MILLING KITS



Niagara Cutter
A SECO TOOLS COMPANY



SOLID END MILLING

NIAGARA CUTTER™ STABILIZER™ 2.0 KITS

DOUBLE YOUR METAL REMOVAL

The **Stabilizer 2.0** family of end mills raises the bar in high performance milling by incorporating a patented continuously varying asymmetrical geometry which helps create a smooth chatter free milling condition. The **ST430.2** Stabilizer 2.0 series are specifically designed for machining steels, alloy steels, copper alloys and cast iron. While the **ST440.2** series are designed for machining ISO-S materials such as stainless steel, steels over 42 Rc, titanium and Inconel. These configurations, along with a specially engineered flute shape, allows for double the feed rates.

- COATING**
- AlTiN



STR430.2 RADIUS END MILL - SLOTTING PARAMETERS AT 1 X D

ITEM NUMBER	KIT DESCRIPTION	END MILLS	ITEM NUMBER	FLUTE DIA	SHANK DIA	LENGTH OF CUT	OVERALL LENGTH	STEEL (SMG P3-P4)		CAST IRON (SMG K1-K4)		KIT PRICE (USD)	KIT PRICE (CAD)
								RPM	FEED (IPM)	RPM	FEED (IPM)		
02941954	6PACKSTR430.2STAB ALTiN	STR430.2-0.125-D2-R010.0-Z4	N09778	1/8	1/8	1/4	1-1/2	12,224	35	10,696	30	\$182	\$226
		STR430.2-0.188-D2-R010.0-Z4	N09786	3/16	3/16	3/8	2	8,127	35	7,110	30		
		STR430.2-0.250-D2-R020.0-Z4	N09794	1/4	1/4	1/2	2-1/2	6,112	35	5,348	30		
		STR430.2-0.313-D2-R020.0-Z4	N09802	5/16	5/16	5/8	2-1/2	4,881	35	4,270	30		
		STR430.2-0.375-D2-R020.3-Z4	N09807	3/8	3/8	3/4	2-1/2	4,075	35	3,565	30		
		STR430.2-0.500-D2-R030.3-Z4	N09845	1/2	1/2	1	3	3,056	35	2,674	30		

STS430.2 SQUARE END MILL - SLOTTING PARAMETERS AT 1 X D

ITEM NUMBER	KIT DESCRIPTION	END MILLS	ITEM NUMBER	FLUTE DIA	SHANK DIA	LENGTH OF CUT	OVERALL LENGTH	STEEL (SMG P3-P4)		CAST IRON (SMG K1-K4)		KIT PRICE (USD)	KIT PRICE (CAD)
								RPM	FEED (IPM)	RPM	FEED (IPM)		
03145208	6PACKSTS430.2STAB ALTiN	STS430.2-0.125-D2-S.0-Z4	N09697	1/8	1/8	1/4	1-1/2	12,224	35	10,696	30	\$182	\$226
		STS430.2-0.188-D2-S.0-Z4	N09705	3/16	3/16	3/8	2	8,127	35	7,110	30		
		STS430.2-0.250-D2-S.0-Z4	N09713	1/4	1/4	1/2	2-1/2	6,112	35	5,348	30		
		STS430.2-0.313-D2-S.0-Z4	N09719	5/16	5/16	5/8	2-1/2	4,881	35	4,270	30		
		STS430.2-0.375-D2-S.3-Z4	N09726	3/8	3/8	3/4	2-1/2	4,075	35	3,565	30		
		STS430.2-0.500-D2-S.3-Z4	N09742	1/2	1/2	1	3	3,056	35	2,674	30		

STR440.2 RADIUS END MILL - SLOTTING PARAMETERS AT 1 X D

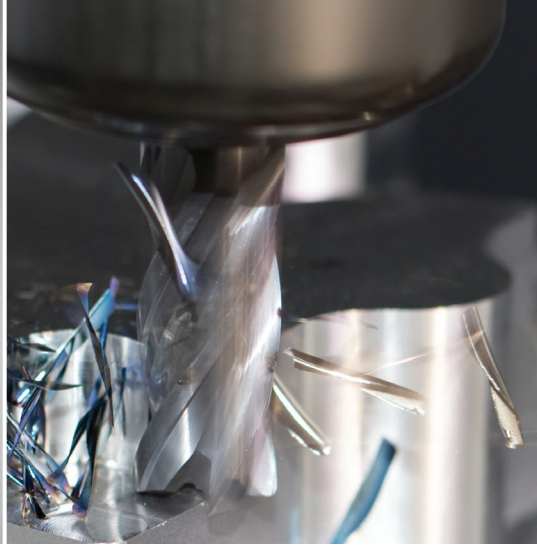
ITEM NUMBER	KIT DESCRIPTION	END MILLS	ITEM NUMBER	FLUTE DIA	SHANK DIA	LENGTH OF CUT	OVERALL LENGTH	TITANIUM (SMG S12)		STAINLESS STEEL (SMG M1-M2)		KIT PRICE (USD)	KIT PRICE (CAD)
								RPM	FEED (IPM)	RPM	FEED (IPM)		
02941959	6 PACK STR440.2 STAB ALTiN	STR440.2-0.125-D2-R010.0-Z4	N09883	1/8	1/8	1/4	1-1/2	5,654	14	11,307	34	\$182	\$226
		STR440.2-0.188-D2-R010.0-Z4	N09889	3/16	3/16	3/8	2	3,759	14	7,515	34		
		STR440.2-0.250-D2-R020.0-Z4	N09897	1/4	1/4	1/2	2-1/2	2,827	14	5,654	34		
		STR440.2-0.313-D2-R020.0-Z4	N09905	5/16	5/16	5/8	2-1/2	2,257	14	4,515	34		
		STR440.2-0.375-D2-R020.3-Z4	N09912	3/8	3/8	3/4	2-1/2	1,885	14	3,769	34		
		STR440.2-0.500-D2-R030.3-Z4	N09948	1/2	1/2	1	3	1,413	14	2,827	34		

Kits include six end mills

For cutting data recommendations and more visit: NIAGARACUTTER.COM



Niagara Cutter
A SECO TOOLS COMPANY



SOLID END MILLING

NIAGARA CUTTER™ GENERAL PURPOSE C430 SERIES KITS

REDUCE YOUR INVENTORY COSTS

The Niagara Cutter **General Purpose C430 Series** solid carbide end mills come equipped with four precision ground flutes that a variety of metal removal applications. Coupled with a TiAlN coating, these general purpose end mills outperform many traditional cutting tools. The C series is offered in a range that is best fit for any job shop environment. This single tool can replace the use of multiple tools for increased productivity, tool life and cost reduction. The C series of Niagara end mills also comes in a two and three flute option.

- 30° Helix
- Square End
- Center Cutting

COATING

- TiAlN

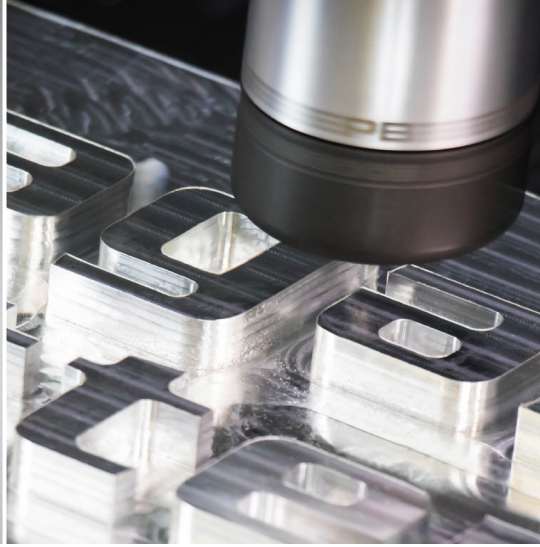


C430 SERIES

ITEM NUMBER	KIT DESCRIPTION	END MILLS	ITEM NUMBER	FLUTE DIA	SHANK DIA	LENGTH OF CUT	OVERALL LENGTH	KIT PRICE (USD)	KIT PRICE (CAD)
03031083	6 PACK C430 GEN TIALN	C430-0.188-D3-S.0-Z4 TIALN	N85590	3/16	3/16	5/8	2	\$153	\$191
		C430-0.250-D3-S.0-Z4 TIALN	N85594	1/4	1/4	3/4	2-1/2		
		C430-0.313-D3-S.0-Z4 TIALN	N85598	5/16	5/16	13/16	2-1/2		
		C430-0.375-D2-S.0-Z4 TIALN	N85602	3/8	3/8	1	2-1/2		
		C430-0.500-D2-S.0-Z4 TIALN	N85610	1/2	1/2	1	3		
		C430-0.625-D2-S.0-Z4 TIALN	N85612	5/8	5/8	1-1/4	3-1/2		

Kits include six end mills





SOLID END MILLING

NIAGARA CUTTER™ ELITE A245/A345 SERIES KITS

MAXIMIZE YOUR NON-FERROUS MILLING PRODUCTIVITY

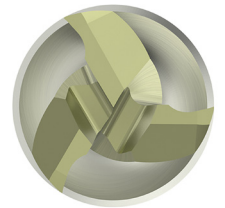
Machining non-ferrous materials like aluminum, brass, copper, and other ISO-N materials allow manufacturers to push their machines to the limit and achieve the highest metal removal rates (MRR). Push past those limits and achieve higher MRR, even with older and less rigid machines – with the upgraded family of **A245/A345** solid carbide end mills from Niagara Cutter.

These products feature a polished K-land and optimized flute shape to control chip formation and reduce friction. Paired with a new proprietary Niagara Cutter ANF (aluminum non-ferrous) PVD coating with the smoothness needed to minimize built-up edge. As a result, manufacturers can reduce cutting forces and power consumption by a minimum of 20%!

- Reduced power consumption
- Increased cutting efficiency
- Improved chip evacuation
- Superior workpiece surface finish
- Increased tool life
- Boost process stability

COATING

- ANF

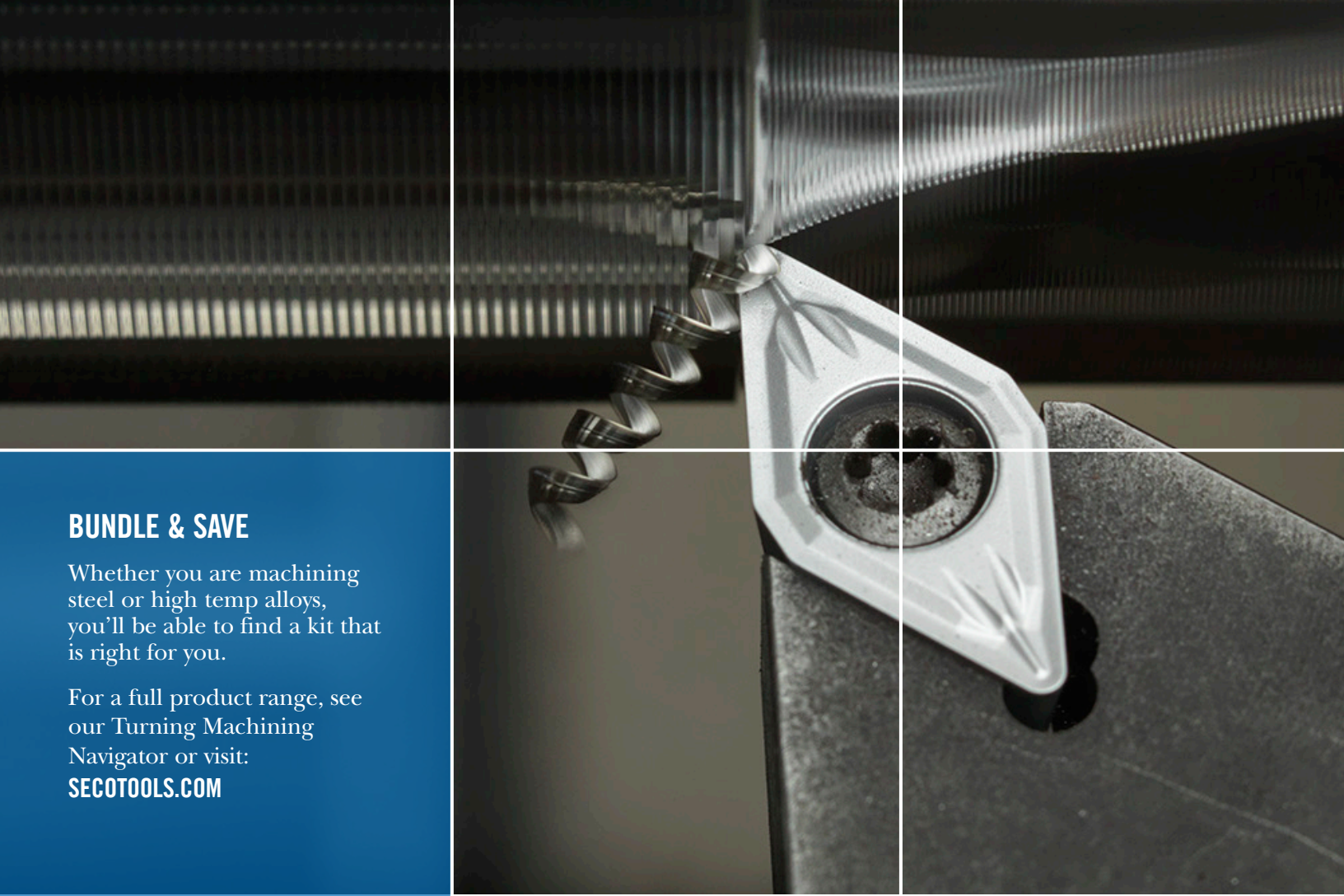


A345 SERIES

ITEM NUMBER	KIT DESCRIPTION	END MILLS	ITEM NUMBER	FLUTE DIA	SHANK DIA	LENGTH OF CUT	OVERALL LENGTH	KIT PRICE (USD)	KIT PRICE (CAD)
03031092	6 PACK A345 ELITE ANF	A345-0.125-D3-S.0-Z3	10023002	1/8	1/8	3/8	1-1/2	\$182	\$226
		A345-0.188-D3-S.0-Z3	10023006	3/16	3/16	9/16	2		
		A345-0.250-D3-S.0-Z3	10023009	1/4	1/4	3/4	2-1/2		
		A345-0.313-D3-S.0-Z3	10023012	5/16	5/16	13/16	2-1/2		
		A345-0.375-D3-S.0-Z3	10023016	3/8	3/8	1	2-1/2		
		A345-0.500-D3-S.0-Z3	10023020	1/2	1/2	1-1/4	3		

Kits include six end mills





BUNDLE & SAVE

Whether you are machining steel or high temp alloys, you'll be able to find a kit that is right for you.

For a full product range, see our Turning Machining Navigator or visit:

SECOTOOLS.COM

TURNING, GROOVING, THREADING, & CUT-OFF **STATIONARY KITS**



TURNING

DURATOMIC® STEEL KITS

NEVER WASTE ANOTHER INSERT WITH USED EDGE DETECTION

Featuring **Duratomic** chrome technology, these steel turning kits are now available in three grades, including TP1501, TP2501, and TP3501. Advanced geometries for general machining and profiling and a 1.0” toolholder ensure you can find what you need. The “D” style holders draw inserts down and back into the pocket for more secure insert holding.

FEATURED GRADES

- TP3501
- TP2501
- TP1501



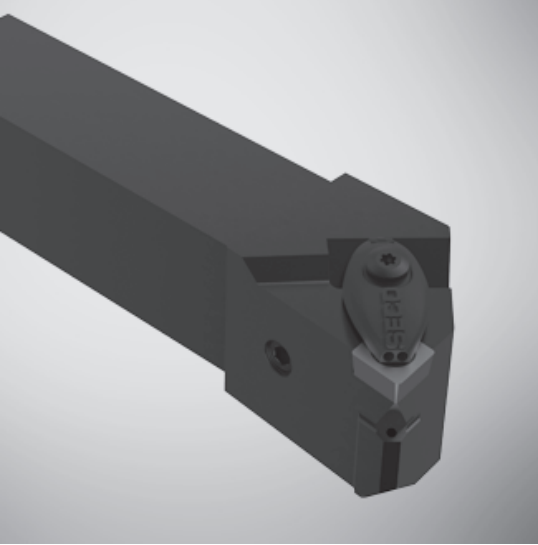
1.0” RIGHT & LEFT HAND TOOLHOLDERS & CNMG/DNMG/WNMG INSERTS

	ITEM NUMBER	KIT DISCRPTION	TOOL	INSERT (10 PCS.)	KIT PRICE (USD)	KIT PRICE (CAD)
FINISH	02874112	TRN 1.0 RH CNMG 432-MF2 TP1501	DCLNR-16-4D	CNMG 432-MF2 TP1501	\$164	\$207
	02874113	TRN 1.0 LH CNMG 432-MF2 TP1501	DCLNL-16-4D	CNMG 432-MF2 TP1501	\$164	\$207
	02874114	TRN 1.0 RH DNMG 432-MF2 TP1501	DDJNR-16-4D-M	DNMG 432-MF2 TP1501	\$194	\$242
	02874115	TRN 1.0 LH DNMG 432-MF2 TP1501	DDJNL-16-4D-M	DNMG 432-MF2 TP1501	\$194	\$242
	03172982	TRN 1.0 RH DNMG 432-M3 TP1501	DDJNR-16-4D-M	DNMG 432-M3 TP1501	\$174	\$220
	03172983	TRN 1.0 LH DNMG 432-M3 TP1501	DDJNL-16-4D-M	DNMG 432-M3 TP1501	\$174	\$220
	03172984	TRN 1.0 RH VNMG 332-M3 TP1501	DVJNR-16-3C	VNMG 332-M3 TP1501	\$164	\$207
	03172985	TRN 1.0 LH VNMG 332-M3 TP1501	DVJNL-16-3C	VNMG 332-M3 TP1501	\$164	\$207
	03172988	TRN 1.0 RH DNMG 432-M3 TP2501	DDJNR-16-4D-M	DNMG 432-M3 TP2501	\$174	\$220
	03172989	TRN 1.0 LH DNMG 432-M3 TP2501	DDJNL-16-4D-M	DNMG 432-M3 TP2501	\$174	\$220
	02864153	TRN 1.0 RH CNMG 432-M3 TP1501	DCLNR-16-4D	CNMG 432-M3 TP1501	\$164	\$207
	02864168	TRN 1.0 LH CNMG 432-M3 TP1501	DCLNL-16-4D	CNMG 432-M3 TP1501	\$164	\$207
	02580500	TRN 1.0 RH CNMG 432-MF5 TP2501	DCLNR-16-4D	CNMG 432-MF5 TP2501	\$164	\$207
	02580510	TRN 1.0 LH CNMG 432-MF5 TP2501	DCLNL-16-4D	CNMG 432-MF5 TP2501	\$164	\$207
	MEDIUM	02631961	TRN 1.0 RH CNMG 432-M5 TP1501	DCLNR-16-4D	CNMG 432-M5 TP1501	\$164
02631962		TRN 1.0 LH CNMG 432-M5 TP1501	DCLNL-16-4D	CNMG 432-M5 TP1501	\$164	\$207
02874116		TRN 1.0 RH WNMG 432-M5 TP1501	DWLNR-16-4D	WNMG 432-M5 TP1501	\$174	\$220
02874117		TRN 1.0 LH WNMG 432-M5 TP1501	DWLNL-16-4D	WNMG 432-M5 TP1501	\$174	\$220
02580520		TRN 1.0 RH WNMG 432-M3 TP2501	DWLNR-16-4D	WNMG 432-M3 TP2501	\$174	\$220
02580529		TRN 1.0 LH WNMG 432-M3 TP2501	DWLNL-16-4D	WNMG 432-M3 TP2501	\$174	\$220
03172980		TRN 1.0 RH WNMG 432-M3 TP1501	DWLNR-16-4D	WNMG 432-M3 TP1501	\$174	\$220
03172981		TRN 1.0 LH WNMG 432-M3 TP1501	DWLNL-16-4D	WNMG 432-M3 TP1501	\$174	\$220
03172987		TRN 1.0 RH CNMG 432-M3 TP2501	DCLNR-16-4D	CNMG 432-M3 TP2501	\$164	\$207
03172986		TRN 1.0 LH CNMG 432-M3 TP2501	DCLNL-16-4D	CNMG 432-M3 TP2501	\$164	\$207
02874118		TRN 1.0 RH CNMG 432-M5 TP2501	DCLNR-16-4D	CNMG 432-M5 TP2501	\$164	\$207
02874119		TRN 1.0 LH CNMG 432-M5 TP2501	DCLNL-16-4D	CNMG 432-M5 TP2501	\$164	\$207
02874120		TRN 1.0 RH WNMG 432-M5 TP2501	DWLNR-16-4D	WNMG 432-M5 TP2501	\$174	\$220
02874121		TRN 1.0 LH WNMG 432-M5 TP2501	DWLNL-16-4D	WNMG 432-M5 TP2501	\$174	\$220
02864155		TRN 1.0 RH CNMG 432-M3 TP3501	DCLNR-16-4D	CNMG 432-M3 TP3501	\$164	\$207
ROUGH	02864170	TRN 1.0 LH CNMG 432-M3 TP3501	DCLNL-16-4D	CNMG 432-M3 TP3501	\$164	\$207
	02864165	TRN 1.0 RH WNMG 432-M5 TP3501	DWLNR-16-4D	WNMG 432-M5 TP3501	\$174	\$220
	02864173	TRN 1.0 LH WNMG 432-M5 TP3501	DWLNL-16-4D	WNMG 432-M5 TP3501	\$174	\$220
	03172990	TRN 1.0 RH CNMG 432-M5 TP3501	DCLNR-16-4D	CNMG 432-M5 TP3501	\$164	\$207
	03172991	TRN 1.0 LH CNMG 432-M5 TP3501	DCLNL-16-4D	CNMG 432-M5 TP3501	\$164	\$207
	02874124	TRN 1.0 RH WNMG 433-MR7 TP2501	DWLNR-16-4D	WNMG 433-MR7 TP2501	\$174	\$220
	02874125	TRN 1.0 LH WNMG 433-MR7 TP2501	DWLNL-16-4D	WNMG 433-MR7 TP2501	\$174	\$220
	02864161	TRN 1.0 RH CNMG 433-MR7 TP3501	DCLNR-16-4D	CNMG 433-MR7 TP3501	\$164	\$207
02864171	TRN 1.0 LH CNMG 433-MR7 TP3501	DCLNL-16-4D	CNMG 433-MR7 TP3501	\$164	\$207	
02874126	TRN 1.0 RH WNMG 433-MR7 TP3501	DWLNR-16-4D	WNMG 433-MR7 TP3501	\$174	\$220	
02874127	TRN 1.0 LH WNMG 433-MR7 TP3501	DWLNL-16-4D	WNMG 433-MR7 TP3501	\$174	\$220	

Kits include one toolholder, ten inserts, and a wrench

For cutting data recommendations and more visit: SECOTOOLS.COM





STAY COOL IN SUPERALLOYS

Particularly effective on titanium and high temp alloys where chip control is problematic, **Jetstream Tooling** is a revolutionary way to improve chip control in almost all materials. We recommend a minimum pump pressure of 200 psi, but you'll see dramatic improvements in chip control, tool life, and the opportunity to use increased cutting speeds as the pressure is increased to 1000 psi.

FEATURED GRADES

- TS2000
- TS2500
- CP500



JET 1.0 RIGHT & LEFT HAND TOOLHOLDERS & CNMP/CNMG/DNMP/DNMG INSERTS

	ITEM NUMBER	KIT DESCRIPTION	TOOL	INSERT (10 PCS.)	KIT PRICE (USD)	KIT PRICE (CAD)
FINISH	02915774	JET 1.0 LH CNMP 432-MF1 CP500	DCLNL-16-4XJETI	CNMP 432-MF1 CP500	\$282	\$360
	02915767	JET 1.0 LH CNMP 432-MF1 TS2000	DCLNL-16-4XJETI	CNMP 432-MF1 TS2000	\$282	\$360
	02915792	JET 1.0 LH DNMP 431-MF1 TS2000	DDJNL-16-4XJETI	DNMP 431-MF1 TS2000	\$311	\$395
	02915794	JET 1.0 LH DNMP 432-MF1 TS2000	DDJNL-16-4XJETI	DNMP 432-MF1 TS2000	\$311	\$395
	02915770	JET 1.0 RH CNMP 432-MF1 CP500	DCLNR-16-4XJETI	CNMP 432-MF1 CP500	\$282	\$360
	02915761	JET 1.0 RH CNMP 432-MF1 TS2000	DCLNR-16-4XJETI	CNMP 432-MF1 TS2000	\$282	\$360
	02915791	JET 1.0 RH DNMP 431-MF1 TS2000	DDJNR-16-4XJETI	DNMP 431-MF1 TS2000	\$311	\$395
	02915793	JET 1.0 RH DNMP 432-MF1 TS2000	DDJNR-16-4XJETI	DNMP 432-MF1 TS2000	\$311	\$395
MEDIUM	02915783	JET 1.0 LH CNMG 432-MF4 CP500	DCLNL-16-4XJETI	CNMG 432-MF4 CP500	\$282	\$360
	02915779	JET 1.0 LH CNMG 432-MF4 TS2000	DCLNL-16-4XJETI	CNMG 432-MF4 TS2000	\$282	\$360
	02915781	JET 1.0 LH CNMG 432-MF4 TS2500	DCLNL-16-4XJETI	CNMG 432-MF4 TS2500	\$282	\$360
	02915782	JET 1.0 RH CNMG 432-MF4 CP500	DCLNR-16-4XJETI	CNMG 432-MF4 CP500	\$282	\$360
	02915778	JET 1.0 RH CNMG 432-MF4 TS2000	DCLNR-16-4XJETI	CNMG 432-MF4 TS2000	\$282	\$360
	02915780	JET 1.0 RH CNMG 432-MF4 TS2500	DCLNR-16-4XJETI	CNMG 432-MF4 TS2500	\$282	\$360
ROUGH	02915787	JET 1.0 LH CNMG 432-MR3 CP500	DCLNL-16-4XJETI	CNMG 432-MR3 CP500	\$282	\$360
	02915785	JET 1.0 LH CNMG 432-MR3 TS2000	DCLNL-16-4XJETI	CNMG 432-MR3 TS2000	\$282	\$360
	02915790	JET 1.0 LH CNMG 432-MR4 TS2500	DCLNL-16-4XJETI	CNMG 432-MR4 TS2500	\$282	\$360
	02915798	JET 1.0 LH DNMG 432-MR3 CP500	DDJNL-16-4XJETI	DNMG 432-MR3 CP500	\$305	\$383
	02915796	JET 1.0 LH DNMG 432-MR3 TS2000	DDJNL-16-4XJETI	DNMG 432-MR3 TS2000	\$311	\$395
	02915800	JET 1.0 LH DNMG 432-MR4 TS2500	DDJNL-16-4XJETI	DNMG 432-MR4 TS2500	\$311	\$395
	02915786	JET 1.0 RH CNMG 432-MR3 CP500	DCLNR-16-4XJETI	CNMG 432-MR3 CP500	\$282	\$360
	02915784	JET 1.0 RH CNMG 432-MR3 TS2000	DCLNR-16-4XJETI	CNMG 432-MR3 TS2000	\$282	\$360
	02915789	JET 1.0 RH CNMG 432-MR4 TS2500	DCLNR-16-4XJETI	CNMG 432-MR4 TS2500	\$282	\$360
	02915797	JET 1.0 RH DNMG 432-MR3 CP500	DDJNR-16-4XJETI	DNMG 432-MR3 CP500	\$305	\$383
02915795	JET 1.0 RH DNMG 432-MR3 TS2000	DDJNR-16-4XJETI	DNMG 432-MR3 TS2000	\$311	\$395	
02915799	JET 1.0 RH DNMG 432-MR4 TS2500	DDJNR-16-4XJETI	DNMG 432-MR4 TS2500	\$311	\$395	

Kits include one toolholder, ten inserts, and a wrench



TURN, GROOVE, CUT-OFF, AND PROFILE WITH ONE INSERT

MDT (Multi-Directional Turning & Grooving) handles profile turning, deep grooving and cut-off operations with one tool for fewer tool changes and reduced tool stock. The unique **Secoloc™** v-shaped clamping delivers the superb stability and safety in addition to high productivity and performance. Applications include turning parts with many different diameters, complicated profiles and grooves, replacing the need for several standard, and special tools.

The **X4 system** incorporating 4-cutting-edge insert is optimized for cut-off and grooving primarily small parts like bars and tubes made from a wide variety of work materials. It consists of indexable tangential inserts and a highly stable clamp design with **Jetstream Tooling® Duo** coolant delivery providing optimal chip control and increased tool life. These strong, dependable system components achieve high accuracy, repeatability, productivity, and surface quality.

Both incorporate CP500, a universal grade used in all materials.

FEATURED GRADES

- CP500



MDT STANDARD & LONG REACH (LG) TOOLHOLDERS

	ITEM NUMBER	KIT DESCRIPTION	TOOL	INSERT (10 PCS.)	INSERT WIDTH (MM)	KIT PRICE (USD)	KIT PRICE (CAD)
	00093101	MDT 1.00 RH 3MM	CFIR 100 03D	LCMF 3MM FT, CP500	3	\$311	\$395
	00093103	MDT 1.00 RH 4MM	CFIR 100 04D	LCMF 4MM FT, CP500	4	\$311	\$395
	00093110	MDT 1.00 RH 5MM	CFIR 100 05D	LCMF 5MM FT, CP500	5	\$328	\$413
	00093111	MDT 1.00 RH 6MM	CFIR 100 06D	LCMF 6MM FT, CP500	6	\$356	\$448
	00093130	MDT 1.00 RH LG 3MM	CFMR 100 03D	LCMR 3MM FT, CP500	3	\$266	\$336
	00093139	MDT 1.00 RH LG 4MM	CFMR 100 04D	LCMR 4MM FT, CP500	4	\$266	\$336
	00093140	MDT 1.00 RH LG 5MM	CFMR 100 05D	LCMR 5MM FT, CP500	5	\$277	\$347
	00093150	MDT 1.00 RH LG 6MM	CFMR 100 06D	LCMR 6MM FT, CP500	6	\$305	\$383

X4 TOOLHOLDERS

	ITEM NUMBER	KIT DESCRIPTION	TOOL	INSERT (2 PCS.)	INSERT WIDTH (IN)	KIT PRICE (USD)	KIT PRICE (CAD)
	02895243	X4 1.00RH.031	X4FR 1002503DJET	X4GK 2503009-A0031RN-MC, CP500	0.031	\$300	\$376
	02895245	X4 1.00RH.047	X4FR 1002503DJET	X4GK 2503009-A0047RN-MC, CP500	0.047	\$300	\$376
	02895248	X4 1.00RH.062	X4FR 1002503DJET	X4GK 2503019-A0062RN-MC, CP500	0.062	\$300	\$376
	02895249	X4 1.00RH.072	X4FR 1002503DJET	X4GK 2503019-A0072RN-MC, CP500	0.072	\$300	\$376
	02895250	X4 1.00RH.094	X4FR 1002503DJET	X4GK 2503019-A0094RN-MC, CP500	0.094	\$300	\$376
	02895251	X4 1.00LH.031	X4FL 1002503DJET	X4GK 2503009-A0031LN-MC, CP500	0.031	\$300	\$376
	02895254	X4 1.00LH.047	X4FL 1002503DJET	X4GK 2503009-A0047LN-MC, CP500	0.047	\$300	\$376
	02895256	X4 1.00LH.062	X4FL 1002503DJET	X4GK 2503019-A0062LN-MC, CP500	0.062	\$300	\$376
	02895257	X4 1.00LH.072	X4FL 1002503DJET	X4GK 2503019-A0072LN-MC, CP500	0.072	\$300	\$376
	02895258	X4 1.00LH.094	X4FL 1002503DJET	X4GK 2503019-A0094LN-MC, CP500	0.094	\$300	\$376

Kits include one 1" toolholder, ten inserts, and a wrench



TURNING - CUT-OFF

150.10 CUT-OFF KITS

SAY GOODBYE TO LONG, TANGLED CHIPS

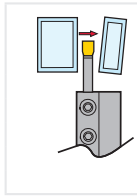
Get the right tools for high performance deep grooving and cut-off applications in low alloy steel and stainless steels. Diameters up to 5.5" are featured in each **150.10** cut-off tooling kit. You will receive one high speed steel cut-off blade that fits in a block type* toolholder, ten high-productivity inserts with the efficient -16 chipbreaker. And, as a bonus, an improved wrench to make insert installation and removal fast and easy.

FEATURED GRADES

- TGP45
- CP600

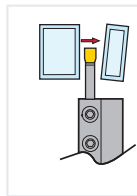


150.10A BLADES & TGP45 INSERTS



ITEM NUMBER	KIT DESCRIPTION	TOOL	INSERT (10 PCS.)	KIT PRICE (USD)	KIT PRICE (CAD)
02535302	150.10A 3MM TGP45 1.00	150.10A-20-3	150.10 3N-16-TGP45	\$227	\$282
02535303	150.10A 3MM TGP45 1.25	150.10A-25-3	150.10 3N-16-TGP45	\$232	\$295
02535304	150.10A 4MM TGP45 1.00	150.10A-20-4	150.10 4N-16-TGP45	\$237	\$300
02535305	150.10A 4MM TGP45 1.25	150.10A-25-4	150.10 4N-16-TGP45	\$243	\$307

150.10A BLADES & CP600 INSERTS



ITEM NUMBER	KIT DESCRIPTION	TOOL	INSERT (10 PCS.)	KIT PRICE (USD)	KIT PRICE (CAD)
02535306	150.10A 3MM CP600 1.00	150.10A-20-3	150.10 3N-16-CP600	\$227	\$282
02535307	150.10A 3MM CP600 1.25	150.10A-25-3	150.10 3N-16-CP600	\$232	\$295
02535308	150.10A 4MM CP600 1.00	150.10A-20-4	150.10 4N-16-CP600	\$237	\$300
02535309	150.10A 4MM CP600 1.25	150.10A-25-4	150.10 4N-16-CP600	\$243	\$307

Kits include one toolholder, ten inserts, and a wrench

*Block type toolholder ordered separately. Blade fits in most competitors blocks

THREADING

EXTERNAL THREADING FOR STEEL AND STAINLESS STEEL KITS



PRODUCE SUPERIOR THREAD SURFACE QUALITY

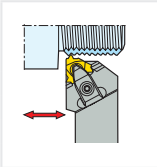
The Seco Tools “A1 & A2” insert chipbreakers is the optimizing geometry for steel and stainless steel, threading. Our **Snap-Tap®** threading kits feature the **HD holder** for maximum rigidity between insert and holder. Internal kits are also available.

FEATURED GRADES

- CP500

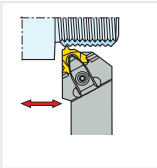


3/4" EXTERNAL THREADING HOLDERS & CP500 INSERTS - STEEL



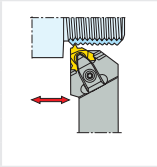
ITEM NUMBER	KIT DESCRIPTION	TOOL	INSERT (2 PCS.)	TPI	MM	KIT PRICE (USD)	KIT PRICE (CAD)
02517057	THD .750 EXTA PARTIAL-A1	CER 075 5-16QHD	16ERA60-A1 CP500	48-16	0.50-1.50	159.00	201.00
02517058	THD .750 EXTA GPARTIAL-A1	CER 075 5-16QHD	16ERAG60-A1 CP500	48-8	0.50-3.00	159.00	201.00
02517059	THD .750 EXT GPARTIAL-A1	CER 075 5-16QHD	16ERG60-A1 CP500	14-8	1.75-3.00	159.00	201.00

1" EXTERNAL THREADING HOLDERS & CP500 INSERTS - STEEL



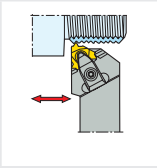
ITEM NUMBER	KIT DESCRIPTION	TOOL	INSERT (2 PCS.)	TPI	MM	KIT PRICE (USD)	KIT PRICE (CAD)
02517107	THD 1.00 EXT APARTIAL-A1	CER 100 6-16QHD	16ERA60-A1 CP500	48-16	0.50-1.50	\$169	\$212
02517108	THD 1.00 EXT AGPARTIAL-A1	CER 100 6-16QHD	16ERAG60-A1 CP500	48-8	0.50-3.00	\$169	\$212
02517109	THD 1.00 EXT GPARTIAL-A1	CER 100 6-16QHD	16ERG60-A1 CP500	14-8	1.75-3.00	\$169	\$212

3/4" EXTERNAL THREADING HOLDERS & CP500 INSERTS - STAINLESS STEEL



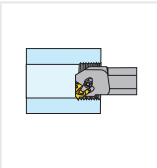
ITEM NUMBER	KIT DESCRIPTION	TOOL	INSERT (2 PCS.)	TPI	MM	KIT PRICE (USD)	KIT PRICE (CAD)
02517074	THD .750 EXT APARTIAL-A2	CER 075 5-16QHD	16ERA60-A2 CP500	48-16	0.50-1.50	\$159	\$201
02517075	THD .750 EXT AGPARTIAL-A2	CER 075 5-16QHD	16ERAG60-A2 CP500	48-8	0.50-3.00	\$159	\$201
02517076	THD .750 EXT GPARTIAL-A2	CER 075 5-16QHD	16ERG60-A2 CP500	14-8	1.75-3.00	\$159	\$201

1" EXTERNAL THREADING HOLDERS & CP500 INSERTS - STAINLESS STEEL



ITEM NUMBER	KIT DESCRIPTION	TOOL	INSERT (2 PCS.)	TPI	MM	KIT PRICE (USD)	KIT PRICE (CAD)
02517124	THD 1.00 EXT APARTIAL-A2	CER 100 6-16QHD	16ERA60-A2 CP500	48-16	0.50-1.50	\$169	\$212
02517125	THD 1.00 EXT AGPARTIAL-A2	CER 100 6-16QHD	16ERAG60-A2 CP500	48-8	0.50-3.00	\$169	\$212
02517126	THD 1.00 EXT GPARTIAL-A2	CER 100 6-16QHD	16ERG60-A2 CP500	14-8	1.75-3.00	\$169	\$212

0.75"-1.00" INTERNAL SNAP TAP/ MINI SNAP TAP HOLDERS & CP500 INSERTS - STAINLESS STEEL



ITEM NUMBER	KIT DESCRIPTION	TOOL	INSERT (2 PCS.)	TPI	MM	KIT PRICE (USD)	KIT PRICE (CAD)
00093196	THD .750 RH SNAPTAP KIT ID	CNR 00075 7-16 AHD	16NR AG60 A2 CP500	48-8	0.50-3.00	\$193	\$242
00093180	THD .750 RH SNAPTAP KIT ID	CNR 00100 8-16 AHD	16NR AG60 A2 CP500	48-8	0.50-3.00	\$232	\$295
00093198	THD .750 RH MINI SNAPTAP KIT ID	SNR 000750-55-09A	09NR A60 A2 CP500	48-16	0.50-1.50	\$182	\$231

Kits include one toolholder, two inserts, and a wrench

Thread turning CNC code generation available on secotools.com product pages.

- Eliminate complicated programming
- Select the optimum holder and inserts
- Identify the best operating parameters

For cutting data recommendations and more visit: SECOTOOLS.COM



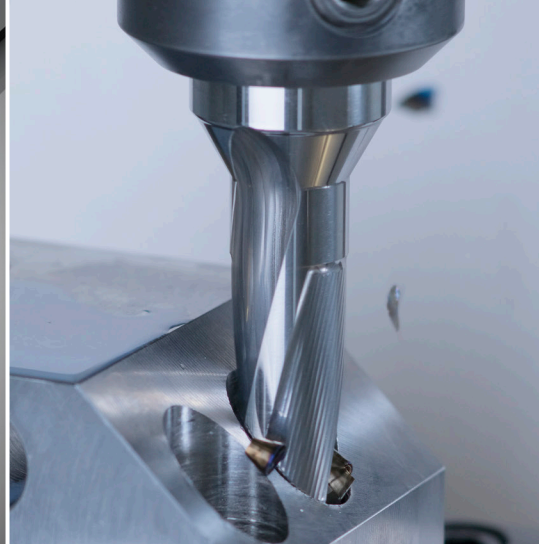


BUNDLE & SAVE

Find a kit that best fits your operation from a popular selection of drills and indexable holemaking cutters grouped into cost saving kits that are ideal for any application.

For a full range, see our Holemaking Navigator or visit: SECOTOOLS.COM

DRILLING HOLEMAKING KITS

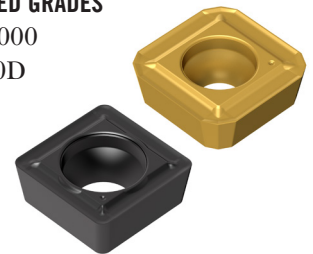


GET A DRILL BODY THAT STANDS THE TEST OF TIME

Redesigned from front to back, the all new **Perfomax** drill body flutes feature a recently developed anti-friction surface or **“wave patterned technology”** to minimize the contact between chips and the flutes for higher application security and chip control optimization. Laser-hardened fronts of the flutes up to 60 HRC allows the drill to withstand chip erosion for much longer periods of time, yielding up to 40% longer drill body life.

FEATURED GRADES

- DP3000
- T400D



SD523 DRILL BODY & INSERTS - 3 X D, R7 & R7-C SHANKS, INCH

	ITEM NUMBER	KIT DESCRIPTION	KIT CONTENTS				KIT PRICE (USD)	KIT PRICE (CAD)	
			DRILL BODY	DRILL DIA	SHANK DIA	INSERTS (10 PCS)			
P	03171443	NG_PERFOMAX_625_3XD_KIT	SD523-0625-188-1000R7	0.625	1.00	SPGX0502-C1 T400D	SCGX050204-P2 DP3000	\$592	\$757
	03171444	NG_PERFOMAX_625_3XD_C_KIT	SD523-0625-188-1000R7-C	0.625	1.00	SPGX0502-C1 T400D	SCGX050204-P2 DP3000	\$592	\$757
	03171445	NG_PERFOMAX_750_3XD_KIT	SD523-0750-225-1000R7	0.750	1.00	SPGX0602-C1 T400D	SCGX050204-P2 DP3000	\$621	\$797
	03171446	NG_PERFOMAX_750_3XD_C_KIT	SD523-0750-225-1000R7-C	0.750	1.00	SPGX0602-C1 T400D	SCGX050204-P2 DP3000	\$621	\$797
	03171447	NG_PERFOMAX_875_3XD_KIT	SD5023-0875-263-1000R7	0.875	1.00	SPGX0703-C1 T400D	SCGX060204-P2 DP3000	\$639	\$815
	03171448	NG_PERFOMAX_875_3XD_C_KIT	SD523-0875-263-1000R7-C	0.875	1.00	SPGX0703-C1 T400D	SCGX060204-P2 DP3000	\$639	\$815
	03171449	NG_PERFOMAX_1.000_3XD_KIT	SD523-1000-300-1250R7	1.000	1.25	SPGX0703-C1 T400D	SCGX070308-P2 DP3000	\$655	\$838
	03171450	NG_PERFOMAX_1.000_3XD_C_KIT	SD523-1000-300-1250R7-C	1.000	1.25	SPGX0703-C1 T400D	SCGX070308-P2 DP3000	\$655	\$838
	03171451	NG_PERFOMAX_1.125_3XD_KIT	SD523-1125-338-1250R7	1.125	1.25	SPGX0903-C1 T400D	SCGX09T308-P2 DP3000	\$740	\$948
	03171452	NG_PERFOMAX_1.125_3XD_C_KIT	SD523-1125-338-1250R7-C	1.125	1.25	SPGX0903-C1 T400D	SCGX09T308-P2 DP3000	\$740	\$948
	03171453	NG_PERFOMAX_1.250_3XD_KIT	SD523-1250-375-1500R7	1.250	1.50	SPGX11T3-C1 T400D	SCGX09T308-P2 DP3000	\$751	\$960
	03171454	NG_PERFOMAX_1.250_3XD_C_KIT	SD523-1250-375-1500R7-C	1.250	1.50	SPGX11T3-C1 T400D	SCGX09T308-P2 DP3000	\$751	\$960
	03171455	NG_PERFOMAX_1.375_3XD_KIT	SD523-1375-413-1500R7	1.375	1.50	SPGX11T3-C1 T400D	SCGX11T308-P2 DP3000	\$813	\$1,040
	03171456	NG_PERFOMAX_1.375_3XD_C_KIT	SD523-1375-413-1500R7-C	1.375	1.50	SPGX11T3-C1 T400D	SCGX11T308-P2 DP3000	\$813	\$1,040
	03171457	NG_PERFOMAX_1.500_3XD_KIT	SD523-1500-450-1500R7	1.500	1.50	SPGX12T3-C1 T400D	SCGX11T308-P2 DP3000	\$830	\$1,070
03171458	NG_PERFOMAX_1.500_3XD_C_KIT	SD523-1500-450-1500R7-C	1.500	1.50	SPGX12T3-C1 T400D	SCGX11T308-P2 DP3000	\$830	\$1,070	

SD524 DRILL BODY & INSERTS - 4 X D, R7 & R7-C SHANKS, INCH

	ITEM NUMBER	KIT DESCRIPTION	KIT CONTENTS				KIT PRICE (USD)	KIT PRICE (CAD)	
			DRILL BODY	DRILL DIA	SHANK DIA	INSERTS (10 PCS)			
P	03171459	NG_PERFOMAX_625_4XD_KIT	SD524-0625-250-1000R7	0.625	1.00	SPGX0502-C1 T400D	SCGX050204-P2 DP3000	\$626	\$802
	03171460	NG_PERFOMAX_625_4XD_C_KIT	SD524-0625-250-1000R7-C	0.625	1.00	SPGX0502-C1 T400D	SCGX050204-P2 DP3000	\$626	\$802
	03171461	NG_PERFOMAX_750_4XD_KIT	SD524-0750-300-1000R7	0.750	1.00	SPGX0602-C1 T400D	SCGX050204-P2 DP3000	\$666	\$855
	03171462	NG_PERFOMAX_750_4XD_C_KIT	SD524-0750-300-1000R7-C	0.750	1.00	SPGX0602-C1 T400D	SCGX050204-P2 DP3000	\$666	\$855
	03171463	NG_PERFOMAX_875_4XD_KIT	SD524-0875-350-1000R7	0.875	1.00	SPGX0703-C1 T400D	SCGX060204-P2 DP3000	\$684	\$873
	03171464	NG_PERFOMAX_875_4XD_C_KIT	SD524-0875-350-1000R7-C	0.875	1.00	SPGX0703-C1 T400D	SCGX060204-P2 DP3000	\$684	\$873
	03171465	NG_PERFOMAX_1.000_4XD_KIT	SD524-1000-400-1250R7	1.000	1.25	SPGX0703-C1 T400D	SCGX070308-P2 DP3000	\$700	\$895
	03171466	NG_PERFOMAX_1.000_4XD_C_KIT	SD524-1000-400-1250R7-C	1.000	1.25	SPGX0703-C1 T400D	SCGX070308-P2 DP3000	\$700	\$895
	03171467	NG_PERFOMAX_1.125_4XD_KIT	SD524-1125-450-1250R7	1.125	1.25	SPGX0903-C1 T400D	SCGX09T308-P2 DP3000	\$791	\$1,010
	03171468	NG_PERFOMAX_1.125_4XD_C_KIT	SD524-1125-450-1250R7-C	1.125	1.25	SPGX0903-C1 T400D	SCGX09T308-P2 DP3000	\$791	\$1,010
	03171469	NG_PERFOMAX_1.250_4XD_KIT	SD524-1250-500-1500R7	1.250	1.50	SPGX11T3-C1 T400D	SCGX09T308-P2 DP3000	\$802	\$1,030
	03171470	NG_PERFOMAX_1.250_4XD_C_KIT	SD524-1250-500-1500R7-C	1.250	1.50	SPGX11T3-C1 T400D	SCGX09T308-P2 DP3000	\$802	\$1,030
	03171471	NG_PERFOMAX_1.375_4XD_KIT	SD524-1375-550-1500R7	1.375	1.50	SPGX11T3-C1 T400D	SCGX11T308-P2 DP3000	\$853	\$1,100
	03171472	NG_PERFOMAX_1.375_4XD_C_KIT	SD524-1375-550-1500R7-C	1.375	1.50	SPGX11T3-C1 T400D	SCGX11T308-P2 DP3000	\$853	\$1,100
	03171473	NG_PERFOMAX_1.500_4XD_KIT	SD524-1500-600-1500R7	1.500	1.50	SPGX12T3-C1 T400D	SCGX11T308-P2 DP3000	\$893	\$1,140
	03171474	NG_PERFOMAX_1.500_4XD_C_KIT	SD524-1500-600-1500R7-C	1.500	1.50	SPGX12T3-C1 T400D	SCGX11T308-P2 DP3000	\$893	\$1,140

Kits include one cutter body, 10 center, and 10 peripheral inserts

Note: R7 shanks for rotating applications / R7-C shanks for stationary application

For cutting data recommendations and more visit: SECOTOOLS.COM





DRILLING/ HOLEMAKING

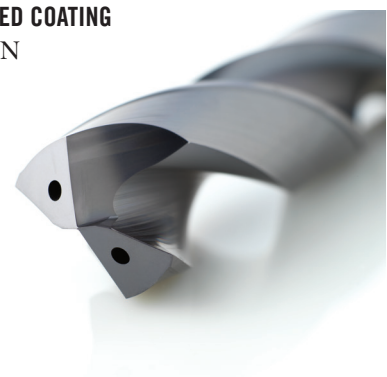
FEEDMAX™ KITS

OPTIMIZE YOUR STEEL DRILLING

Increase productivity up to 35% with longer tool life, thanks to the combination of a new geometry and an advanced coating technology. The all new **Feedmax -P** drills for excellence in steel and iron drilling now have strong, straight cutting edges with coolant holes close by for pinpointed cutting edge cooling. Design features such as increased corner chamfers protect the drill point and provide exceptional chip control and evacuation to ensure application security. Drill more holes in a shorter amount of time and use fewer drills to do so.

FEATURED COATING

- TiAIN



TAP DRILLS - 5 x D

	ITEM NUMBER	KIT DESCRIPTION	KIT CONTENTS (INCH)			KIT PRICE (USD)	KIT PRICE (CAD)
			DRILLS (2 PCS)	DRILL DIA	SHANK DIA		
P	03171482	NG_FEEDMAX_8-32_KIT	SD205A-0350-023-06R1-P	0.138	0.236	\$198	\$254
	03171483	NG_FEEDMAX_10-24_KIT	SD205A-0390-029-06R1-P	0.154	0.236	\$198	\$254
	03171484	NG_FEEDMAX_1/4-20_KIT	SD205A-0510-035-06R1-P	0.201	0.236	\$198	\$254
	03171485	NG_FEEDMAX_5/16-18_KIT	SD205A-0660-043-08R1-P	0.260	0.315	\$232	\$295
	03171486	NG_FEEDMAX_3/8-16_KIT	SD205A-0800-043-08R1-P	0.315	0.315	\$232	\$295
	03171487	NG_FEEDMAX_7/16-14_KIT	SD205A-0990-049-10R1-P	0.390	0.394	\$282	\$360
	03171488	NG_FEEDMAX_1/2-13_KIT	SD205A-1080-056-12R1-P	0.425	0.472	\$384	\$491

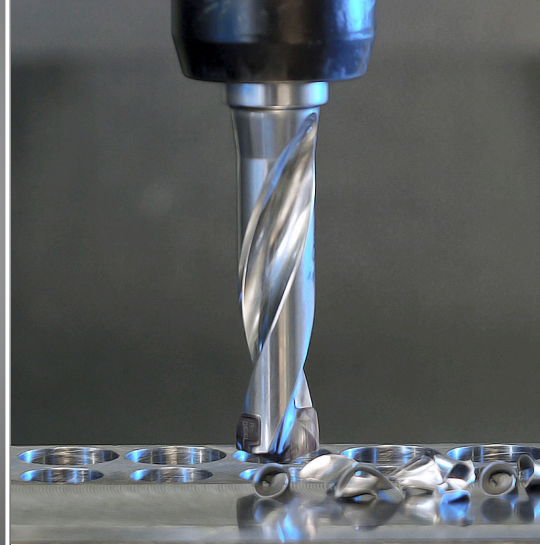
Kits include two drills

TAP DRILLS - 5 x D

	ITEM NUMBER	KIT DESCRIPTION	KIT CONTENTS (METRIC)			KIT PRICE (USD)	KIT PRICE (CAD)
			DRILLS (2 PCS)	DRILL DIA	SHANK DIA		
P	03171475	NG_FEEDMAX_M4_KIT	SD205A-0330-023-06R1-P	3.3	6	\$198	\$254
	03171476	NG_FEEDMAX_M5_KIT	SD205A-0420-029-06R1-P	4.2	6	\$198	\$254
	03171477	NG_FEEDMAX_M6_KIT	SD205A-0500-035-06R1-P	5.0	6	\$198	\$254
	03171478	NG_FEEDMAX_M8_KIT	SD205A-0680-043-08R1-P	6.8	8	\$232	\$295
	03171479	NG_FEEDMAX_M10_KIT	SD205A-0850-049-10R1-P	8.5	10	\$282	\$360
	03171480	NG_FEEDMAX_M12_KIT	SD205A-1020-056-12R1-P	10.2	12	\$384	\$491
	03171481	NG_FEEDMAX_M14_KIT	SD205A-1200-056-12R1-P	12.0	12	\$384	\$491

Kits include two drills

Note: -P Geometry can also be used in iron and hardened steel



IMPROVE CHIP FORMATION AND REDUCE BUILD-UP

Crownloc® Plus drills are the economical, convenient way to achieve the holemaking tolerance of a brazed drill with superior metal removal rates. These drills don't need reconditioning, so they can be more cost-effective. The TiAlN coating on the exchangeable head and 10% micrograin substrate serve to increase toughness and wear resistance, while reducing the potential for edge build up.

- Optimized geometry for improved chip formation and enhanced centering capability for different work piece materials
- P geometry for drilling in steel and iron

FEATURED GRADES

- SD400



CROWNLOC PLUS SD403, 3 x D & SD400 TIPS

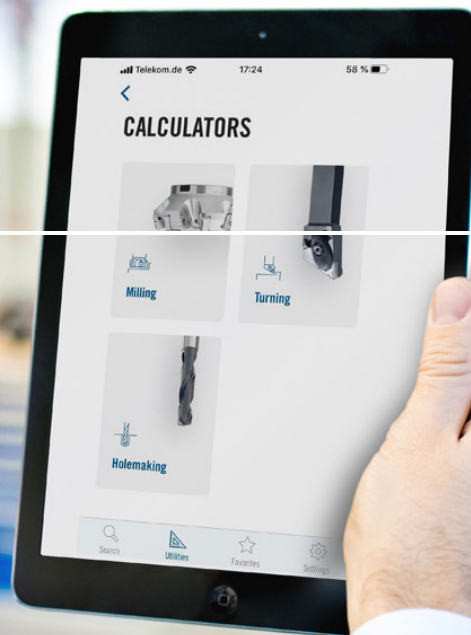
	ITEM NUMBER	KIT DESCRIPTION	KIT CONTENTS			KIT PRICE (USD)	KIT PRICE (CAD)	
			DRILL BODY	DRILL DIA	SHANK DIA			DRILL TIP (2 PCS)
P	03171422	CROWNLOC_PLUS.500_3XD_KIT	SD403-12.50/12.99-39-0625R1	0.500	0.625	SD400-12.70-P	\$435	\$550
	03171423	CROWNLOC_PLUS.532_3XD_KIT	SD403-13.00/13.99-42-0625R1	0.532	0.625	SD400-13.5-P	\$441	\$560
	03171424	CROWNLOC_PLUS.562_3XD_KIT	SD403-14.00/14.99-45-0625R1	0.562	0.625	SD400-14.288-P	\$452	\$574
	03171425	CROWNLOC_PLUS.594_3XD_KIT	SD403-15.00/15.99-48-0625R1	0.594	0.625	SD400-15.08-P	\$470	\$596
	03171426	CROWNLOC_PLUS.625_3XD_KIT	SD403-15.00/15.99-48-0625R1	0.625	0.625	SD400-15.875-P	\$470	\$596
	03171427	CROWNLOC_PLUS.656_3XD_KIT	SD403-16.00/16.99-51-0750R1	0.656	0.750	SD400-16.669-P	\$491	\$625
	03171428	CROWNLOC_PLUS.687_3XD_KIT	SD403-17.00/17.99-54-0750R1	0.687	0.750	SD400-17.463-P	\$491	\$625
	03171430	CROWNLOC_PLUS.719_3XD_KIT	SD403-18.00/18.99-57-0750R1	0.719	0.750	SD400-18.256-P	\$548	\$693
	03171431	CROWNLOC_PLUS.750_3XD_KIT	SD403-19.00/19.99-60-0750R1	0.750	0.750	SD400-19.05-P	\$553	\$705
	03171432	CROWNLOC_PLUS.781_3XD_KIT	SD403-19.00/19.99-60-0750R1	0.781	0.750	SD400-19.844-P	\$553	\$705

CROWNLOC PLUS SD405, 5 x D & SD400 TIPS

	ITEM NUMBER	KIT DESCRIPTION	KIT CONTENTS			KIT PRICE (USD)	KIT PRICE (CAD)	
			DRILL BODY	DRILL DIA	SHANK DIA			DRILL TIP (2 PCS)
P	03171433	CROWNLOC_PLUS.500_5XD_KIT	SD405-12.50/12.99-65-0625R1	0.500	0.625	SD400-12.70-P	\$485	\$618
	03171434	CROWNLOC_PLUS.532_5XD_KIT	SD405-13.00/13.99-70-0625R1	0.532	0.625	SD400-13.5-P	\$491	\$625
	03171435	CROWNLOC_PLUS.562_5XD_KIT	SD405-14.00/14.99-75-0625R1	0.562	0.625	SD400-14.288-P	\$504	\$635
	03171436	CROWNLOC_PLUS.594_5XD_KIT	SD405-15.00/15.99-80-0625R1	0.594	0.625	SD400-15.08-P	\$519	\$659
	03171437	CROWNLOC_PLUS.625_5XD_KIT	SD405-15.00/15.99-80-0625R1	0.625	0.625	SD400-15.875-P	\$519	\$659
	03171438	CROWNLOC_PLUS.656_5XD_KIT	SD405-16.00/16.99-85-0750R1	0.656	0.750	SD400-16.669-P	\$543	\$687
	03171439	CROWNLOC_PLUS.687_5XD_KIT	SD405-17.00/17.99-90-0750R1	0.687	0.750	SD400-17.463-P	\$543	\$687
	03171440	CROWNLOC_PLUS.719_5XD_KIT	SD405-18.00/18.99-95-0750R1	0.719	0.750	SD400-18.256-P	\$611	\$773
	03171441	CROWNLOC_PLUS.750_5XD_KIT	SD405-19.00/19.99-100-0750R1	0.750	0.750	SD400-19.05-P	\$616	\$779
	03171442	CROWNLOC_PLUS.781_5XD_KIT	SD405-19.00/19.99-100-0750R1	0.781	0.750	SD400-19.844-P	\$616	\$779

Kits include one drill body, 2 tips, and a wrench

**EVERYTHING
SECO TOOLS
AT YOUR
FINGERTIPS**



ACHIEVE MORE WITH YOUR METAL CUTTING SOLUTIONS SECO ASSISTANT APP

No internet? No problem. When there's no internet connection you can search Seco products; calculate feeds, speed, material removal rates for any brand, as well search and compare indexable inserts from other manufacturers.

Seco Assistant, an all-in-one mobile app, makes it easy to find metal cutting solutions that work for you without leaving the production floor.

Achieve all of your indexable application needs:

- Keep current data on our over 30,000 standard products in your pocket
- Quickly share lists of Favorite tools with your team
- Easily access product details by scanning the bar code on Seco Tools packaging
- Utilize offline features such as machining calculators



For technical assistance, call:
1-800-TEC-TEAM

For customer service, call:
1-248-528-5220

SECO TOOLS, LLC
NORTH AMERICAN HEADQUARTERS
2805 Bellingham Drive
Troy, MI 48083
248-528-5200

SECOTOOLS.COM

P-2202-2500 GT22-100
Copyright © 2022 Seco Tools, LLC
Printed in USA. All rights reserved.

Follow Seco Tools on Twitter, Facebook, YouTube, and LinkedIn. Stay up to date on new products and technology, special events, promotions, and more.

@SECOTOOLS
@SECOTOOLSUS

