



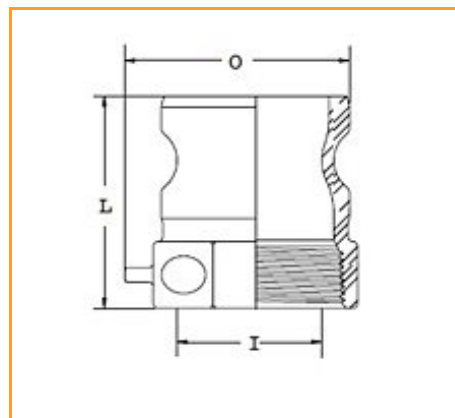
## Item # 20135790, INSTA-LOCK Fitting TYPE A Male Adapter x Female NPT Thread A150AL 1 1/2 in Aluminum

**APPLICATION:** Type A fitting is commonly threaded onto a pipe, threaded hose end or manifold system, which is connected and disconnected on a regular basis. Insta-Lock™ fittings are designed for liquids and dry bulk. Consult the chemical resistance guide for specific chemical recommendations.

**BRANDING:** Example: Continental Contitech A200SS

**PRESSURE RATING:** Sizes 1/2"– 2", 250 psi; sizes 2 1/2"– 4", 150 psi; sizes 5"– 6", 75 psi. Recommended working pressure ratings based on ambient temperature (70 °F).

Note: Continental Contitech Insta-Lock Fittings are never to be used in steam or compressed air service.



[Product Specifications](#) | [Specifications](#)

### Product Specifications

<b>Style</b>	Type A
<b>Material</b>	Aluminum
<b>Brand</b>	INSTA-LOCK™ TYPE A

Order Code

650-825

## Specifications

End Type A	Male Adapter
End Size A	1 1/2
End Type B	Female NPT Thread
End Size B	1 1/2
O - Max. O.D.	2.368 in 60.15 mm
L - Overall Length	2.531 in 64.29 mm
I - Min. I.D.	1.375 in
Weight	0.3400 lb
Distance Chain Lug Extends from Body	0.375 in
Order Increment	1

[MideastUS@contitech.us](mailto:MideastUS@contitech.us)

1-800-235-4632

Contitech.us

**ContiTech**