



Industrial Matting Systems

Dry Environments

Wet / Oily Environments

Anti-Static / Non-Conductive

Entry & Logo Mats

2015
PRODUCT
CATALOG

www.CrownMats.com



Crown Matting Technologies, located in Fremont, Ohio, has been setting the pace in commercial and industrial matting, using proprietary innovative technologies to further our products and the industry for over 70 years.

Today, our purpose has never been clearer: manufacture and deliver products with the same strength and character of the workforce we support. Our products are as easy to stand on as they are to stand behind.

Crown Matting Technologies has been fortunate enough to cushion a generation of workers, helping to reduce leg and back fatigue, thereby improving the safety and productivity of your workforce. We're honored to have done so. And, we look forward to serving our fellow workers for generations to come ... one mat at a time.



Working hard for the hard working.™

Workers-Delight™ Spark-Safe™ p.5
On cover: Workers-Delight™ Deck Plate p.4

CONTENTS

PRODUCT NAME ITEM# PAGE

Dry Environments 2

Zedlan™ Foam	3
Workers-Delight™ Traction Plus 543/553	4
Workers-Delight™ Deck Plate..... 540/550	4
Workers-Delight™ Corrugated..... 544/554	5
Workers-Delight™ Spark-Safe™ 545/555	5
Wear-Bond™ Comfort-King™ 560/562	6
Alleviator™ Comfort-King™ 465	6
Comfort-King™ 440/445	7
Para-Mount™ 649	7
Industrial Deck Plate 500/505	8
Spark-Safe™ 580	8
Safety-Step™ Solid-Top..... 685	9
Yoga Flex® 695	9
Wear-Bond™ Tuff-Spun® 520/522	10
Tuff-Spun® Foot-Lover™ 410/411/430/431	10

Wet / Oily Environments 11

Ergo-X-Treme™ 775/776/777/779	12
Dura-Step II™ 752/753	12
Safewalk™ 630/635/636	13
Safety-Step™ Perforated 680/681	13
Safe-Flow Plus™ 648	14
Safewalk Light™ 645/646	14
Diamond Deluxe with Grit-Safe™ .. 133	15
Sani-Tred™ 667	15

Anti-Static / Non-Conductive 16

Electrically Conductive Deck Plate™ .. 930	17
Stat-Control™ 920	17
Comfort-King™ Anti-Static 910	17
Military Deck Plate - Switchboard Runner..... 960	18
Military Smooth - Switchboard Runner..... 965	18
Corrugated - Switchboard Runner..... 950	18
Pro-Tekt™ 820	19
Deck Plate 850	19
Sta-Kleen™ 800	19
Corrugated Rubber..... 840	19

Entry & Logo Mats 20

Cambridge™ 275	21
Oxford™ Elite 265	21
Oxford™ 360	21
Mat-A-Dor® 100	22
Tire-Track™ 225	22
Logo Mats	23
Graphic Inlay..... 020/021/022	23
Embossed Anti-Fatigue Mat 050	23
Flocked Mat 010	23
HD Jet-Print™ 030/035	23
Care & Maintenance	24
How to Order	24
Warranty	24
Chemical Resistance Chart	25

Dry Environments

Crown offers top-performing dry area floor mats for virtually any application.

From Industrial assembly lines to work stations and packing areas, these mats are designed and manufactured to provide outstanding support against muscular fatigue, as well as aid in the ongoing efforts to make every commercial environment as safe as possible for your workforce.

In addition, our Fusion Technology, which permanently bonds two surfaces without the use of glue or adhesive, provides unmatched durability.

With both traditional and made-to-finish products, you won't find a more versatile selection anywhere.

Workers-Delight™ Traction Plus p.4



As resilient as your workforce. As tough as your workplace.

Zedlan™ Foam is the byproduct of two scientists' mission to develop a foam, hard-wearing enough to withstand the harshest environments, yet resilient enough to support the ergonomic needs of your workforce. With three-times the "bounce" of standard vinyl foam, our patented Zedlan™ Foam truly defines high-performance for the industry.

Strong. Resilient. Safe. Three critical matting features that can dramatically influence the success your workforce and your business. Zedlan™ Foam was developed with these workplace imperatives in mind.

Here's how we back it up:

- **Strong** - Zedlan™ Foam outwears similar products by nearly three to one
- **Resilient** - Zedlan™ Foam has three times the bounce of traditional anti-fatigue products
- **Safe** - combined with our exclusive slip resistant technology, Zedlan™ Foam offers superior traction compared to standard foam products

Zedlan™ Foam. Just one more way we support our customers by developing industry leading products that support their workforce.

TAILORED SOLUTIONS

Heavy machinery and concrete floors don't move easily, so we've made our mats hard-wearing and easy to work with. From custom cut and finish, to adaptable and expandable "build to suit" products, we've got you – and your floors – covered.

Our commitment to providing the right solution for unique environments means our products can be produced in a vast variety of configurations, cuts-outs, and shapes (including angles and semi-circles) as well as seamed for larger-width offerings. We've also developed optional nosing for many of our products, providing even more design choices to meet even the most elaborate environmental challenges. Crown's Total Customization offering provides a turn-key approach to a tailored matting solution you simply won't find anywhere else.

If you have a matting challenge you've been working hard to resolve, give us a call. We're here to help, and we're pretty confident we can.



Look for the Zedlan™ Foam icon in this catalog to identify products containing our patented formulation.



Exclusive technology that permanently bonds two surfaces without use of glues or adhesives.



The Spark Resistant icon indicates FMVSS302 certified products.



The D.I.N.P. Free icon indicates products that comply with the State of California's Proposition 65 regulations.



Our Slip-Resistant icon indicates foam products coated with our unique slip-resistant formulation to provide additional safety benefits.



The Oily Areas icon indicates products that have been approved for use in certain oily environments. Please see the chemical resistance guide on page 25 for additional product information.

#543/#553 Workers-Delight™ Traction Plus

DRY AREA | PREMIUM

FEATURES

- Innovative PVC raised-herringbone top surface affords multi-directional grip
- Patented Zedlan™ Foam combined with our fusion technology creates an unmatched level of durability and comfort
- New slip-resistant coating on underside of mat ensures steadiness and control on smooth surfaces
- Use for finishing stations, assembly stations and work stations

SPECIFICATIONS

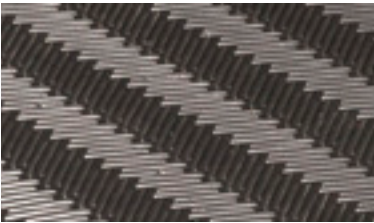
Standard Sizes: 2' x 3' 3' x 5' 3' x 12'
Rolls: 2' x 75' 3' x 75' 4' x 75'
Total Customization: Up to 12' wide
Thickness:
#543 - Standard – 5/8"
(30% recycled content)
#553 - Ultra – 7/8" provides 50% more comfort
(20% recycled content)

WARRANTY

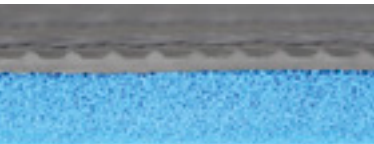
Lifetime Warranty against delamination

COLORS

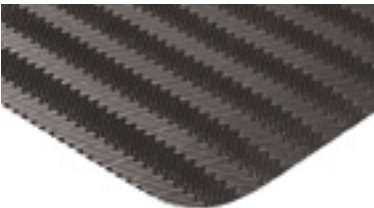
Black



Herringbone PVC surface



Zedlan™ Foam with slip-resistant coating



Rounded corners and beveled edges



#544/#554 Workers-Delight™ Corrugated

DRY AREA | PREMIUM

FEATURES

- Corrugated rubber surface offers directional traction
- Patented Zedlan™ Foam combined with our fusion technology creates an unmatched level of durability and comfort
- New slip-resistant coating on underside of mat ensures steadiness and control on smooth surfaces
- Use for areas with incidental chemical spillage

SPECIFICATIONS

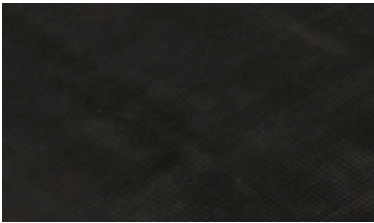
Standard Sizes: 2' x 3' 3' x 5' 3' x 12'
Rolls: 2' x 75' 3' x 75' 4' x 75'
Total Customization: Up to 12' wide
Thickness:
#544 - Standard – 5/8"
(30% recycled content)
#554 - Ultra – 7/8" provides 50% more comfort
(20% recycled content)

WARRANTY

Lifetime Warranty against delamination

COLORS

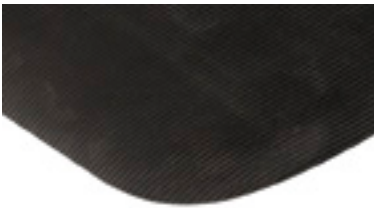
Black



Corrugated rubber surface



Zedlan™ Foam with slip-resistant coating



Rounded corners and beveled edges



#540/#550 Workers-Delight™ Deck Plate

DRY AREA | PREMIUM

FEATURES

- Deck plate PVC surface offers comfort and durability
- Patented Zedlan™ Foam combined with our fusion technology creates an unmatched level of durability and comfort
- New slip-resistant coating on underside of mat ensures steadiness and control on smooth surfaces
- Use for assembly lines, work stations, cart traffic areas, finishing stations or assembly stations

SPECIFICATIONS

Standard Sizes: 2' x 3' 3' x 5' 3' x 12'
Rolls: 2' x 75' 3' x 75' 4' x 75'
Total Customization: Up to 12' wide
Thickness:
#540 - Supreme – 5/8"
(25% recycled content)
#550 - Ultra – 7/8" provides 25 % more comfort
(20% recycled content)

WARRANTY

Lifetime Warranty against delamination

COLORS

Black & Yellow, Gray, Black



Deck plate PVC surface



Zedlan™ Foam with slip-resistant coating



Rounded corners and beveled edges



#545/#555 Workers-Delight™ Spark-Safe™

DRY AREA | PREMIUM

FEATURES

- Specially formulated spark-resistant rubber surface (passes FMVSS302) repels sparks and hot metal shards
- Patented Zedlan™ Foam combined with our fusion technology creates an unmatched level of durability and comfort
- New slip-resistant coating on underside of mat ensures steadiness and control on smooth surfaces
- For use in machine shops, assembly lines, steel mills or maintenance departments

SPECIFICATIONS

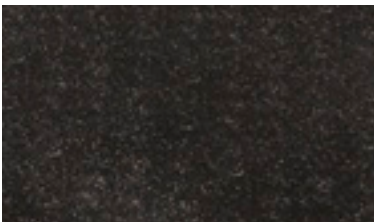
Standard Sizes: 2' x 3' 3' x 5' 3' x 12'
Rolls: 2' x 75' 3' x 75' 4' x 75'
Total Customization: Up to 12' wide
Thickness:
#545 - Standard – 5/8"
(30% recycled content)
#555 - Ultra – 7/8" provides 50% more comfort
(20% recycled content)

WARRANTY

Lifetime Warranty against delamination

COLORS

Black



Spark-Resistant rubber top surface



Zedlan™ Foam with slip-resistant coating



Rounded corners and beveled edges



#560/#562 Wear-Bond™ Comfort-King™

DRY AREA | BEST

FEATURES

- Wear-Bond™ process molecularly bonds foam injected PVC top surface with Zedlan™ Foam, creating greater overall comfort than rigid PVC/rubber-type surfaces
- Patented Zedlan™ Foam combined with our fusion technology creates an unmatched level of durability and comfort
- Use for work stations, pick modules, pharmacies, packaging areas or cashier stations

SPECIFICATIONS

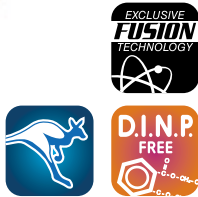
Standard Sizes: 2' x 3' 3' x 5' 3' x 12'
Rolls: 2' x 75' 3' x 75' 4' x 75'
Total Customization: Up to 75'
Thickness: 9/16"

WARRANTY

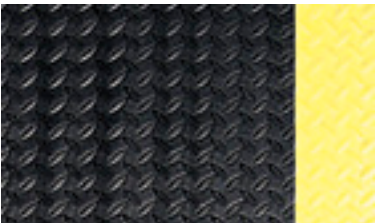
Lifetime Warranty against delamination

COLORS

#560 Pebble Surface: Black & Yellow, Black, Gray
#562 Deck-Top Surface: Black & Yellow, Black, Gray



#560 Foam injected PVC pebble embossed surface



#562 Foam injected PVC deck-top surface



Zedlan™ Foam

#440/#445 Comfort-King™

DRY AREA | BEST

FEATURES

- Patented Zedlan™ Foam outwears other foam products by nearly three to one
- Available with anti-microbial additives to help prevent mold, mildew, and bacterial growth
- Use for work stations, finishing/assembly stations, cashier stations or pharmacies

SPECIFICATIONS

Standard Sizes: 2' x 3' 3' x 5' 3' x 12'
Rolls: 2' x 60' 3' x 60' 4' x 60'*
**Not available with yellow borders*

Total Customization: Up to 60'

Thickness:

#440 - Standard – 3/8"

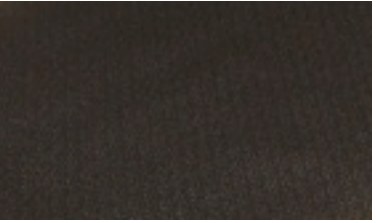
#445 - Supreme – 1/2" provides 33% more comfort

WARRANTY

1 Year

COLORS

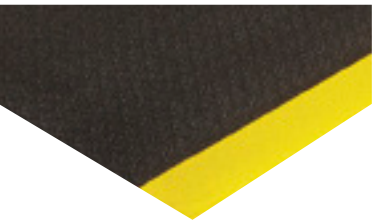
Black & Yellow, Steel Gray, Royal Blue, Black



Textured surface



Zedlan™ Foam



Tapered edges

#465 Alleviator™ Comfort-King™

DRY AREA | BEST

FEATURES

- Double-thick patented Zedlan™ Foam adds unmatched comfort and resilience
- Specifically designed for employee work stations
- Use for cashier stations, hotel front desks, pharmacies or retail work counters

SPECIFICATIONS

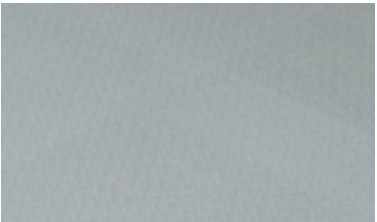
Standard Sizes: 2' x 3' 3' x 5'
Rolls: 2' x 30' 3' x 30' 4' x 30'
Total Customization: Up to 75'
Thickness: 7/8"

WARRANTY

1 Year

COLORS

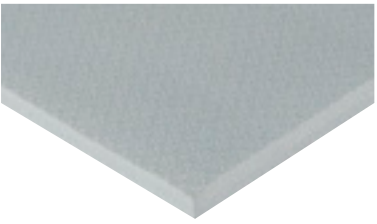
Steel Gray, Black



Textured surface



Zedlan™ Foam



Beveled edges

#649 Para-Mount™

DRY AREA | BEST

FEATURES

- Patented nitrile rubber construction resists water, oil, and solvents
- Anti-microbial properties help prevent mold, mildew, and bacterial growth
- Nitrile rubber properties allow for an easy-to-clean product
- For use in virtually any work station, wet or dry

SPECIFICATIONS

Standard Sizes: 2' x 3' 3' x 5'
3' x 10' 4' x 6'

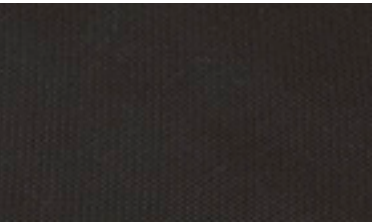
Thickness: 3/4"

WARRANTY

1 Year

COLORS

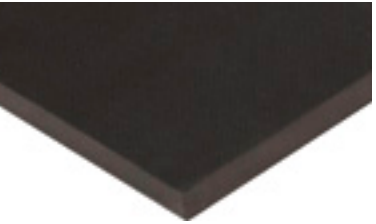
Black



Textured surface



100% Nitrile rubber



Beveled edges

#500/#505 Industrial Deck Plate

DRY AREA | BETTER



FEATURES

- Deck plate surface fused to an industrial grade PVC foam backing offers durability and comfort
- Durable slip-resistant surface tolerates cart traffic
- Use for finishing stations, assembly stations or work stations

SPECIFICATIONS

Standard Sizes: 2' x 3' 3' x 5' 3' x 12'
Rolls: 2' x 75' 3' x 75' 4' x 75'
Total Customization: Up to 12' wide
Thickness:
#500 - Standard – 9/16" (30% recycled content)
#505 - Ultra – 7/8" provides 50% more comfort (20% recycled content)

WARRANTY

1 Year

COLORS

Black & Yellow, Gray, Black



Deck plate surface



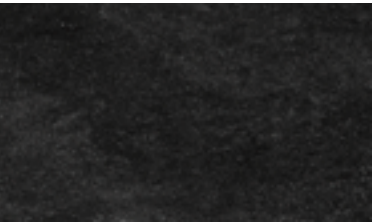
Industrial grade foam



Rounded corners and beveled edges

#685 Safety-Step™ Solid-Top

DRY AREA | BETTER



Solid rubber



Rubber nibs on underside



Modular built-in connectors

FEATURES

- Solid rubber interlocking system allows for unlimited length and width onsite configurations (1' increments)
- Optional snap-on ramps available in black or yellow
- Use for factory work stations, large work cells or assembly lines

SPECIFICATIONS

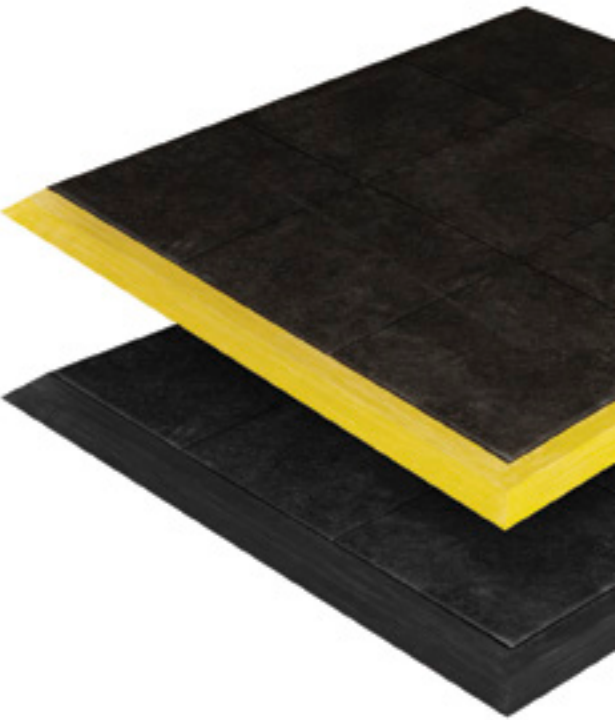
Standard Sizes: 3' x 3'
Total Customization: Up to 12' wide
Thickness: 5/8"

WARRANTY

1 Year

COLORS

Black with built in connectors, Yellow ramp or Beveled Black available



#580 Spark-Safe™

DRY AREA | BETTER



FEATURES

- Specially formulated spark-resistant rubber surface (passes FMVSS302) repels sparks and hot metal shards
- Durable industrial-grade foam base provides excellent anti-fatigue relief
- Use for machine shops, assembly lines, steel mills or maintenance departments

SPECIFICATIONS

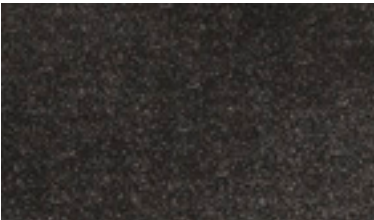
Standard Sizes: 2' x 3' 3' x 5' 3' x 12'
Rolls: 2' x 75' 3' x 75' 4' x 75'
Total Customization: Up to 12' wide
Thickness: 1/2"

WARRANTY

1 Year

COLORS

Black



Spark-resistant rubber top surface



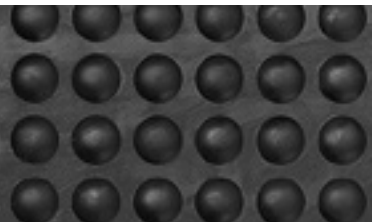
Industrial grade foam



Rounded corners and beveled edges

#695 Yoga-Flex®

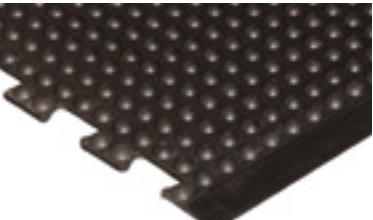
DRY AREA | BETTER



Bubble-top surface



Industrial grade rubber



Interlocking design with beveled edges

FEATURES

- High/Low bubble surface encourages micro-movements that reduce fatigue and muscle pain
- Interlocking system allows for unlimited length of matting (47" increments)
- Use for factories, work stations, finishing / assembly stations or shipping and packaging areas

SPECIFICATIONS

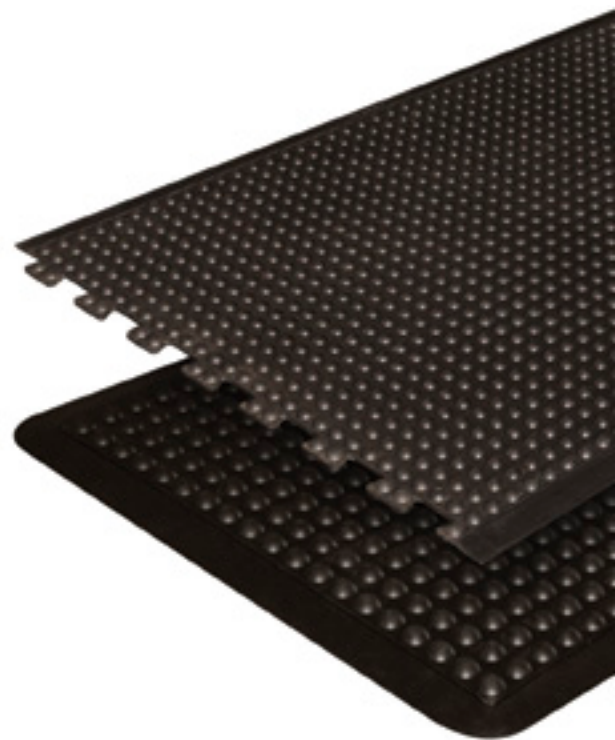
Standard Sizes:
Mat: 2' x 3' 35" x 47"
Modular Center: 35" x 47"
Modular End: 35" x 47"
Total Customization: Unavailable
Thickness: 1/2"

WARRANTY

1 Year

COLORS

Black



#520/#522 Wear-Bond™ Tuff-Spun®

DRY AREA | GOOD

FEATURES

- Wear-Bond™ process molecularly bonds foam injected PVC top surface with industrial-grade foam, creating greater overall comfort than rigid PVC/rubber-type surfaces
- Use for assembly stations, packaging areas, service counters or cashier stations

SPECIFICATIONS

Standard Sizes: 2' x 3' 3' x 5' 3' x 12'
Rolls: 2' x 75' 3' x 75' 4' x 75'
Total Customization: Up to 75'
Thickness: 9/16"

WARRANTY

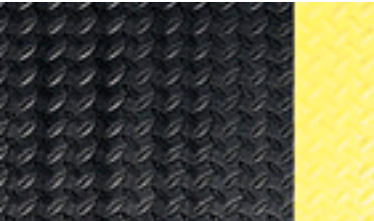
1 Year

COLORS

#520 Pebble Surface: Black & Yellow, Black, Gray
#522 Deck-Top Surface: Black & Yellow, Black



#520 Foam injected PVC pebble embossed surface



#522 Foam injected PVC deck-top surface



Industrial grade foam

#410/#411/#430/#431 Tuff-Spun® Foot-Lover™

DRY AREA | GOOD

FEATURES

- Closed-cell PVC foam optimizes economical comfort and fatigue relief
- Beveled edges help reduce tripping hazards
- Use for service counters, mailrooms, cashier stations or warehousing/packaging stations

SPECIFICATIONS

Standard Sizes: 2' x 3' 3' x 5' 3' x 12'
27" x 3'
Rolls: 2' x 60' 3' x 60' 4' x 60'
6' x 60' *

Total Customization: Up to 60'

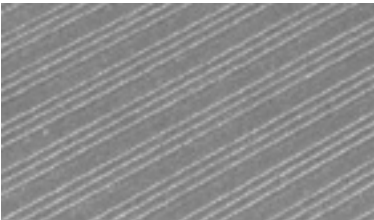
Thickness: #410, #430: 3/8"
#411, #431: 5/8"*
**Not available with yellow borders*

WARRANTY

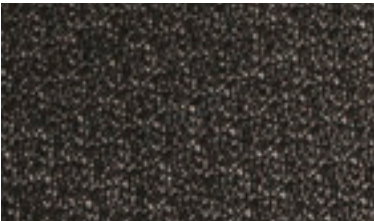
1 Year

COLORS

#410, #430 Ribbed Surface:
Black & Yellow, Black, Gray
#411, #431 Pebble Surface:
Black & Yellow, Black, Gray



#410/#430 Ribbed embossed surface



#411/#431 Pebble embossed surface



Industrial grade foam

Wet / Oily Environments

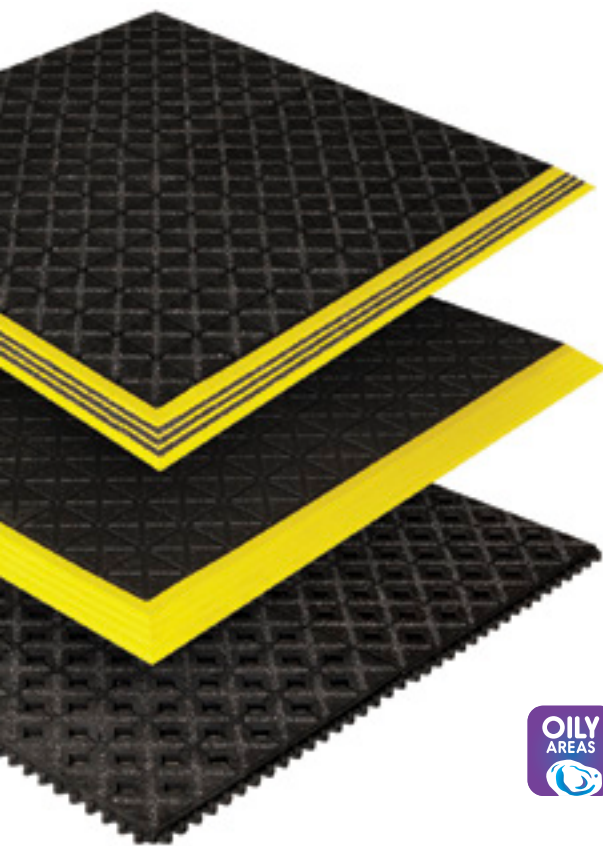
Industrial and commercial settings bring plenty of flooring challenges. Add water, chemicals, or any other fluids to the already complicated environment, and your safety and health concerns multiply ... quickly.

To help you address those concerns, we've built one of the most comprehensive and proven wet/oily environment matting lines available. We offer both solid surface and drainage mats and that's just the start.

Need grit for extra traction? Nitrile infused mats that can handle industrial fluids without breaking down? Perforated surfaces to move fluid through quickly and reduce slip/fall hazards? Modular mats for easy on-site custom solutions? Pick one, or tell us your needs and we'll problem-solve with you. Chances are we've got what you're looking for.

#775/#776/#777/#779 Ergo X-Treme™

OILY AREA | PREMIUM



FEATURES

- 100% molded nitrile rubber offers ten times the lifespan of standard rubber mats
- Aggressively patterned top surface ensures maximum foot traction in slippery environments
- Use for factories, machine shops, auto manufacturers, power transmission facilities

SPECIFICATIONS

Standard Sizes: 18" x 18" tiles (8 per case)

Pre-Constructed Mats:

3' x 4 1/2' 3' x 6' 3' x 9'

Total Customization: Up to 12' wide

Thickness: 3/4"

Finish: Safety ramps available with or without grit

WARRANTY

1 Year

COLORS

#775: Black solid-top surface

#776: Black with drainage slots

#777: Black with drainage slots and Grit-Safe™

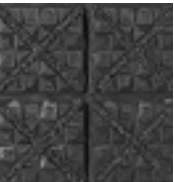
#779: Black with open drainage and Grit-Safe™



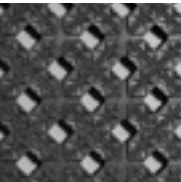
#775 Solid Top



#776 Drainage Slots



#777 Drainage slots and Grit-Safe™



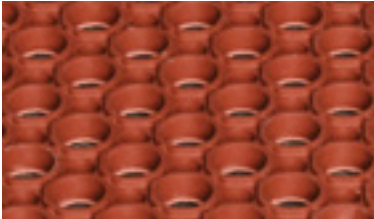
#778 Open drainage and Grit-Safe™



Interlocking system allows for unlimited length and width customization

#630/#635/#636 Safewalk™

WET / OILY AREA | PREMIUM



#636 Nitrile rubber blend terra cotta



#635 General purpose rubber



#630 Pre-assembled yellow ramps available

FEATURES

- Terra Cotta nitrile rubber blend offers resistance to a wide range of greases
- Heavy-duty rubber allows easy drainage of liquid and debris
- Use for industrial work stations, food processing, kitchens, bars or cafeterias

SPECIFICATIONS

Standard Sizes: 3' x 5'

3 Sides Pre-assembled*:

26" x 40" 38" x 40" 38" x 64 38" x 124"

4 Sides Pre-assembled*:

28" x 40" 40" x 40" 40" x 64" 40" x 124"

* general purpose (black) only

Total Customization: Unavailable

Thickness: 7/8"

Finish: #630 Pre-assembled yellow ramps available

WARRANTY

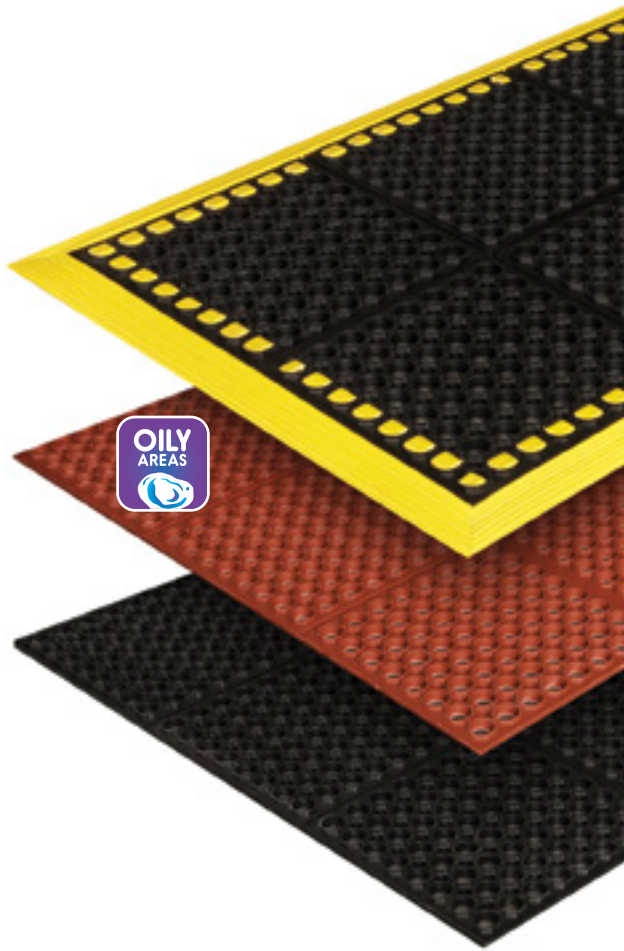
1 Year

COLORS

#630 Black with pre-assembled Yellow ramps

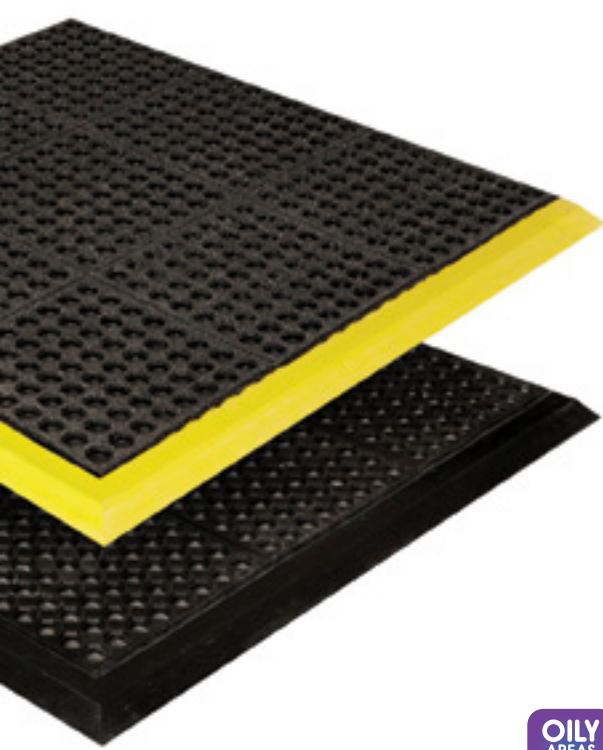
#635 Black

#636 Blend Terra Cotta



#752/#753 Dura-Step II™

OILY AREA | PREMIUM



FEATURES

- 100% molded nitrile rubber offers resistance to a wide range of oils and fluids
- High-traction Grit-Safe™ coating provides extreme slip resistance and added safety in highly oily areas
- Use for machine shops, auto manufacturers, power transmission facilities or garages – anywhere there are greasy work stations

SPECIFICATIONS

Standard Sizes: 3' x 3'

Total Customization: Up to 12' wide

Thickness: 5/8"

Finish: Safety ramps available in black or yellow

WARRANTY

1 Year

COLORS

#753: Black with Grit-Safe™

#752: Black



#752 Black without Grit-Safe™



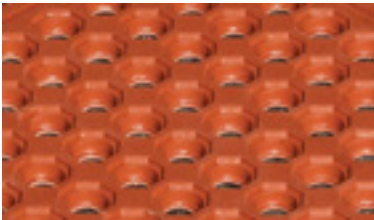
#753 Black with Grit-Safe™



Interlocking system allows for unlimited length and width configurations

#680/#681 Safety-Step™ Perforated

WET / OILY AREA | PREMIUM



#681 Nitrile rubber blend terra cotta



#680 General purpose rubber



5/8" thick nibbed backing

FEATURES

- Terra Cotta nitrile rubber blend offers resistance to a wide range of greases
- Heavy-duty modular rubber allows easy drainage of liquid and customization of sizes
- Use for factories, irregularly-sized work stations, sanding stations, grinding stations or food service

SPECIFICATIONS

Standard Sizes: 3' x 3'

Total Customization: Up to 12' wide

Thickness: 5/8"

Finish: Beveled male/female ramps available

WARRANTY

1 Year

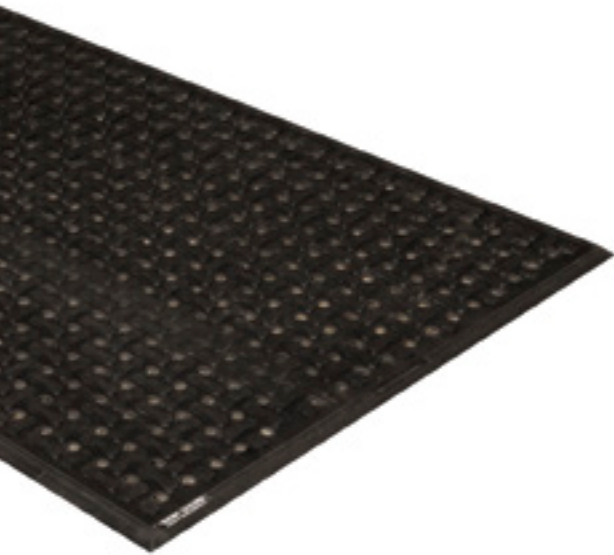
COLORS

#681 Nitrile Rubber Blend Terra Cotta (grease resistant, 15% recycled)

#680 Rubber Black (general purpose, 47% recycled)



#648 Safe-Flow Plus™
OILY AREA | BEST



FEATURES

- 100% nitrile rubber offers maximum resistance to water, oil, grease, chemicals and animal fats
- Contains anti-microbial agent that inhibits the growth of odor-causing bacteria and fungi
- Use for food processing and packaging, kitchens, industrial work stations or freezers / cold storage

SPECIFICATIONS

Standard Sizes: 23" x 35"
34" x 54 1/2"
34" x 113"

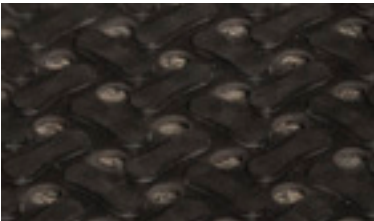
Total Customization: Unavailable
Thickness: 3/8"

WARRANTY

1 Year

COLORS

Black



100% Nitrile rubber with drainage holes



3/8" Thick

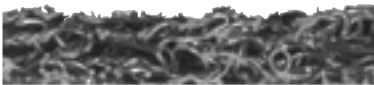


Framed design to contain liquids

#133 Diamond-Deluxe™ with Grit-Safe™
OILY AREA | BETTER



Black diamond embossed pattern



1/2" Thick



Lengths cuts up to 40'

FEATURES

- Durable open loop design elevates workers while allowing fluids to flow through
- Specially formulated oil-resistant vinyl resists water and most oils
- Use for factories / garages, work stations, oil changing pits, steel mills or outdoor entrances

SPECIFICATIONS

Standard Sizes: 3' x 5'
Rolls: 3' x 40' 4' x 40'
Total Customization: Up to 40'
Thickness: 1/2"

WARRANTY

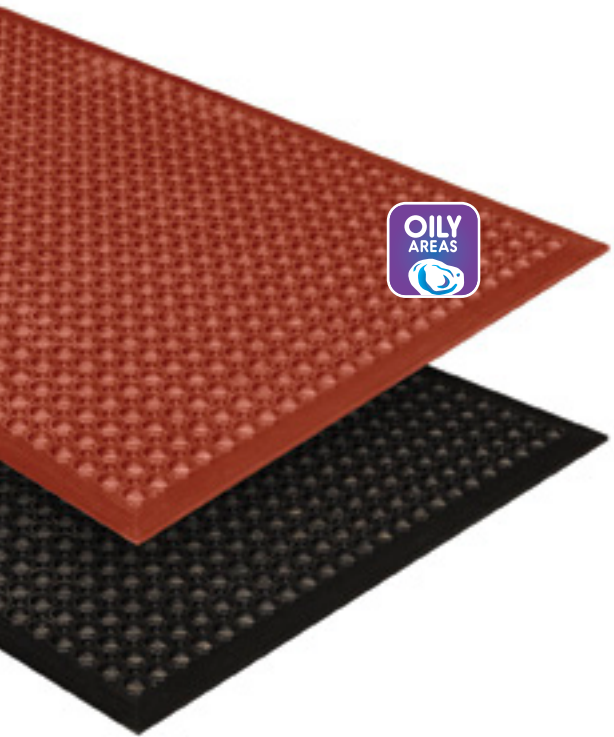
1 Year

COLORS

Black



#645/#646 Safewalk-Light™
WET / OILY AREA | BEST



FEATURES

- Low profile mat with molded beveled borders for increased safety
- Raised surface rings provide excellent traction
- Use for bars / dishwashing areas, food processing / packaging or laundry rooms

SPECIFICATIONS

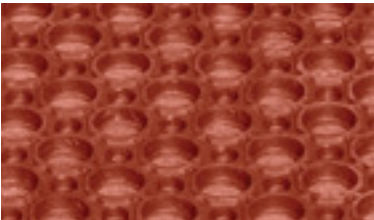
Standard Sizes: 3' x 5' 3' x 10'
3' x 15' 3' x 20"
10' length mats and longer have a seam every 5'
Total Customization: Unavailable
Thickness: 1/2"

WARRANTY

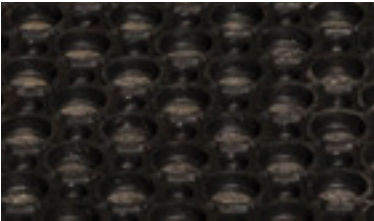
1 Year

COLORS

#645 Rubber Black (general purpose)
#646 Nitrile Rubber Blend Terra Cotta (grease resistant)



#646 Nitrile rubber blend terra cotta

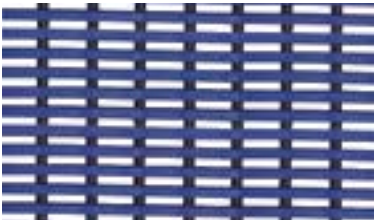


#645 General purpose rubber



1/2" Thick

#667 Sani-Tred™
WET AREA | BETTER



Slip-resistant, embossed surface



3/8" Thick



2, 3, 4' wide rolls

FEATURES

- Open-grid construction made from non-porous extruded PVC
- Sanitized anti-bacterial and anti-fungal additives
- Use for health clubs, showers, spas, swimming pools, saunas and Jacuzzis or where barefoot traffic is extensive

SPECIFICATIONS

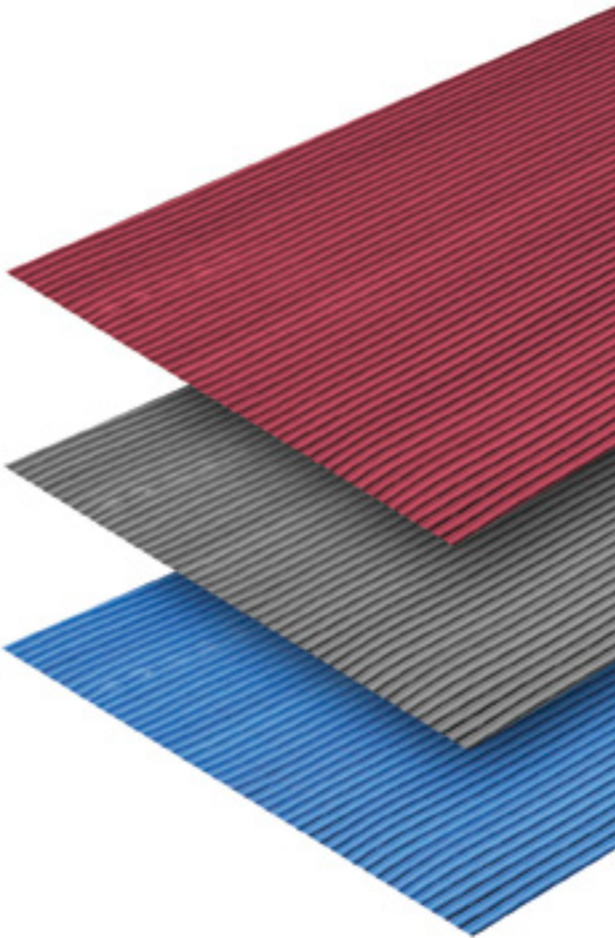
Rolls: 2' x 40' 3' x 40' 4' x 40'
Total Customization: Unavailable
Thickness: 3/8"

WARRANTY

1 Year

COLORS

Ocean Blue, Charcoal Gray, Mulberry Red



Anti-Static (ESD), Non-Conductive & Runners

Whether you require anti-static matting for technical settings, non-conductive matting for high-voltage applications, or matting runners to protect your floor, we've developed a variety of products to meet the needs of these specific environments.

The discharge of static electricity or exposure to high-voltage equipment can greatly increase safety and health risks in any number of work environments. Our extensive line of Anti-Static (ESD) and Non-Conductive Matting can quickly provide the necessary safeguards for workers and equipment. Our mats are tested to withstand rigorous standards and extreme conditions, from corporate "clean room" applications to the most demanding military applications.

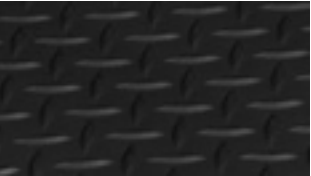
Keeping static and electrical sensitive work areas under control is one more way we help build safer and more productive environments for your workforce.

Corrugated-Switchboard Runner p 18



#930 Electrically Conductive Deck Plate

ANTI-STATIC | PREMIUM



Deck top surface



PVC foam backing

Stock mats include one installed ground cord

FEATURES

- Static dissipative surface resistivity of 10^6 ohms per square
- PVC foam backing allows good anti-fatigue relief while standing
- Use for computer work stations and terminals, sensitive electronic equipment or electrical rooms

SPECIFICATIONS

Standard Sizes: 2' x 3' 3' x 5' 3' x 12'

Rolls: 3' x 75'

Total Customization: Available / Custom cuts need one ground cord per 10' (sold separately)

Thickness: 9/16"

WARRANTY

1 Year

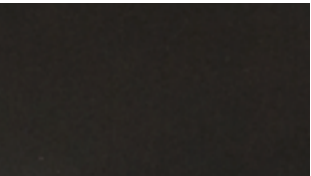
COLORS

Black



#920 Stat-Control™

ANTI-STATIC | BEST



Smooth vinyl surface



PVC foam backing

Stock mats include one installed ground cord

FEATURES

- Static dissipative surface resistivity of 10^7 ohms per square
- PVC foam backing allows good anti-fatigue relief while standing
- Use for computer work stations, cashier stations or test / electronic stations

SPECIFICATIONS

Standard Sizes: 2' x 3' 3' x 5' 3' x 12'

Rolls: 3' x 75'

Total Customization: Available / Custom cuts need one ground cord per 10' (sold separately)

Thickness: 1/2"

WARRANTY

1 Year

COLORS

Black



#910 Comfort-King™ Anti-Static

ANTI-STATIC | BETTER



Textured surface



Zedlan™ Foam

Stock mats include one installed ground cord

FEATURES

- Static dissipative resistivity of 10^9 ohms per square
- Highly energized Zedlan™ Foam that combines softness, resilience and durability for exceptional relief
- Use for computer work stations, electronic / testing stations or laboratories

SPECIFICATIONS

Standard Sizes: 2' x 3' 3' x 5' 3' x 12'

Rolls: 2' x 60' 3' x 60' 4' x 60' 6' x 60'

Total Customization: Available / Custom cuts need one ground cord per 10' (sold separately)

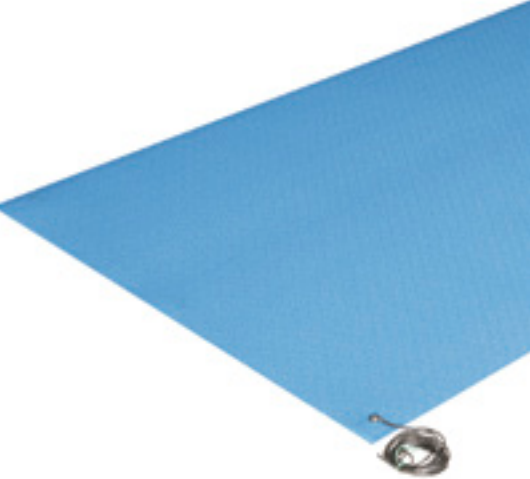
Thickness: 3/8"

WARRANTY

1 Year

COLORS

Royal Blue, Black, Steel Gray



#960 Military Deck Plate - Switchboard Runner

NON-CONDUCTIVE | HIGH-VOLTAGE APPLICATIONS

FEATURES

- Tested for performance following sulfuric acid immersion, oxygen bomb aging and UV light exposure
- Flame-resistant; certified to Mil Std-1623
- Dielectric rating: 30,000 volts
- Use for factories / finishing/assembly stations, military installations or near switchboards and other electrical equipment

SPECIFICATIONS

Rolls: 3' x 75'

Total Customization: Unavailable

Thickness: 3/16"

WARRANTY 1 Year

COLORS Gray



Deck top surface



3/16" Thick



3' x 75'

#965 Military Smooth - Switchboard Runner

NON-CONDUCTIVE | HIGH-VOLTAGE APPLICATIONS

FEATURES

- Flame-resistant; certified to Mil Std-1623
- Wear resistance: ASTM-D-1242
- Dielectric rating: 30,000 volts
- Use for factories / finishing/assembly stations, military installations or near switchboards and other electrical equipment

SPECIFICATIONS

Rolls: 3' x 75'

Total Customization: Unavailable

Thickness: 1/8"

WARRANTY 1 Year

COLORS Black



Smooth top surface



1/8" Thick



3' x 75'

#950 Corrugated - Switchboard Runner

NON-CONDUCTIVE | HIGH-VOLTAGE APPLICATIONS

FEATURES

- Dielectric rating: 30,000 volts
- Meets ASTM standards: D178, Type 2, Class 2
- Meets all optional ASTM standards for resistance to ozone, flames and oils
- Use for computer workstations, fuse boxes, control panels or switchboards

SPECIFICATIONS

Rolls: 3' x 75'

Total Customization: Length cuts up to 75'

Thickness: 1/4"

WARRANTY 1 Year

COLORS Black



Corrugated top surface



1/8" Thick



3' x 75'

#820 Pro-Tekt™

RUNNERS



1/8" Thick

FEATURES

- Economical, pebble surfaced vinyl foam runner allows for a variety of uses
- Cost effective, slip-resistant and chemical-resistant floor protection

SPECIFICATIONS

Rolls: 3' x 60' 4' x 60' 6' x 60'

Total Customization: Length cuts up to 60'

Thickness: 1/8"

WARRANTY 1 Year

COLORS Black

#850 Deck Plate

RUNNERS



5/32" Thick

FEATURES

- Distinctive raised-diamond pattern increases traction and durability
- Easy to clean vinyl surface is resistant to most common chemicals

SPECIFICATIONS

Rolls: 2' x 75' 3' x 75' 4' x 75'

Total Customization: Length cuts up to 75'

Thickness: 5/32"

WARRANTY 1 Year

COLORS Black, Gray, Black & Yellow

#800 Sta-Kleen™

RUNNERS



1/8" Thick

FEATURES

- Industrial grade round-rib vinyl runner
- Surface resists normal acids, alkalis, oil, grease and most organic solvents, if removed quickly

SPECIFICATIONS

Rolls: 2' x 105' 3' x 105' 4' x 105'

Total Customization: Length cuts up to 105'

Thickness: 1/8"

WARRANTY 1 Year

COLORS Black

#840 Corrugated Rubber

RUNNERS



1/8" Thick

FEATURES

- Durable V-groove rubber surface is slip-resistant
- Resists abrasion

SPECIFICATIONS

Rolls: 2' x 75' 3' x 75'

Total Customization: Length cuts up to 75'

Thickness: 1/8"

WARRANTY 1 Year

COLORS Black

Entrance and Logo Mats

In addition to just looking great, entry mats work harder than you might imagine. Entrance matting helps minimize the accumulation of dirt in your building. A proper arrangement of 15 linear feet of entrance matting will prevent up to 80% of the accumulated dirt from spreading onto your floors. And, that's a lot of dirt. Up to 24 pounds can be tracked in by just 1,000 people over a 20-day work period.

In addition to fighting dirt and dust, entry mats also:

- Reduce maintenance costs
- Protect floors
- Improve air quality
- Enhance the look of your work place
- Diminish the risk of slips and accidents

Need more information? Go to www.CrownMats.com for the bigger scoop on dirt in the workplace and how Crown Mats can help.

Oxford™ Elite p.21

#275 Cambridge™ OUTDOOR | PREMIUM



Polyamide Nylon blend fibers

- FEATURES**
- Innovated Polyamide Nylon 6 monofilament and Nylon 6,6 fibers provide one of the most aggressive scraping technologies in the industry, trapping dirt before it infiltrates the building
 - Rubber backing provides increased durability in mild to severe environments

SPECIFICATIONS

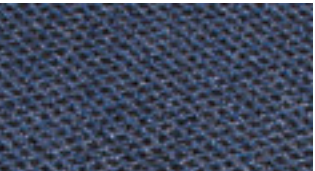
Standard Sizes: 2' x 3' 3' x 5'
 3' x 10' 4' x 6"

Finish: Rubber backing/borders

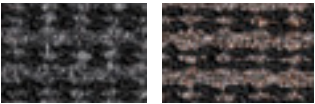
WARRANTY **COLORS**
1 Year Black, Dark Gray, Navy, Brown



#265 Oxford™ Elite SCRAPER / WIPER | PREMIUM



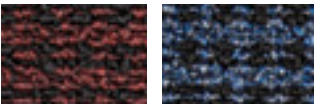
Olefin fiber mix



Black/Gray



Black/Brown



Black/Burgundy



Black/Blue

- FEATURES**
- Heavyweight loop pile combined with aggressive nylon fibers exceeds the performance of similar scraper/wiper mats
 - Attractive pattern hides dirt and keeps your entrance clean

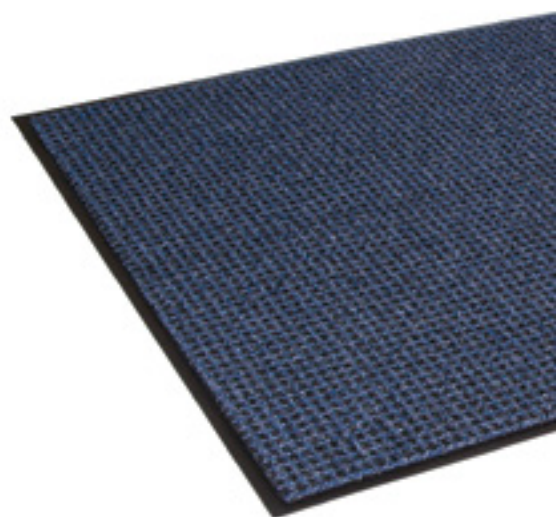
SPECIFICATIONS

Standard Sizes: 2' x 3' 3' x 4' 3' x 5'
 3' x 10' 4' x 6' 4' x 10'

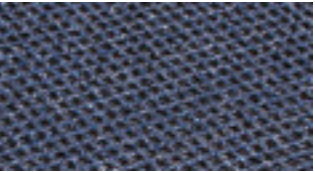
Rolls: 3' x 60' 4' x 60' 6' x 60'

Total Customization: Up to 11'9" x 60'

WARRANTY **COLORS**
1 Year Black/Gray, Black/Brown,
 Black/Burgundy, Black/Blue



#360 Oxford™ WIPER | PREMIUM



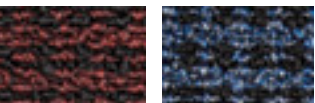
Heavy loop pile fibers



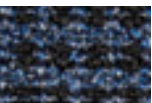
Black/Gray



Black/Brown



Black/Burgundy



Black/Blue

- FEATURES**
- Heavyweight loop pile mat combines performance and appearance like no other on the wiper market
 - Attractive pattern hides dirt and keeps your entrance clean

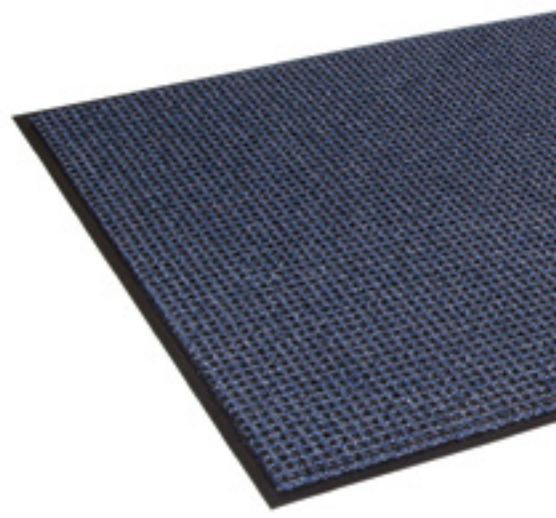
SPECIFICATIONS

Standard Sizes: 2' x 3' 3' x 4' 3' x 5'
 3' x 10' 4' x 6' 4' x 10'

Rolls: 3' x 60' 4' x 60' 6' x 60'

Total Customization: Up to 11'9" x 60'

WARRANTY **COLORS**
1 Year Black/Gray, Black/Brown,
 Black/Burgundy, Black/Blue



#100 Mat-A-Dor™
OUTDOOR | SCRAPER | PREMIUM



- FEATURES**
- Contains 60% more “fingers” than standard fingertip mats, for outstanding scraping action
 - Beveled edge reservoir retains up to 1 gallon of liquid per square yard

SPECIFICATIONS
Standard Sizes: 24” X 32” 32” X 39” 36” X 72”
Total Customization: Unavailable
Thickness: 5/8”

WARRANTY **COLORS**
1 Year Black



Rubber mat with corrugated back and molded edging

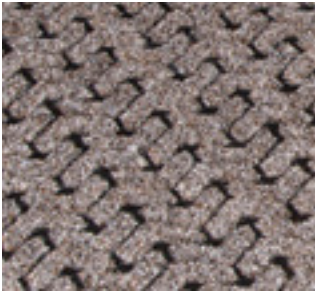
#225 Tire-Track™
INDOOR | SCRAPER / WIPER | PREMIUM



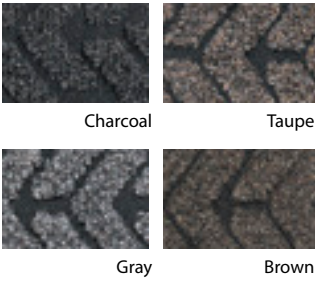
- FEATURES**
- Industrial strength carpet can hold up to 2 gallons of liquid per square yard
 - Unique pattern offers effective scraping action and long lasting appearance

SPECIFICATIONS
Standard Sizes: 2’ x 3’ 3’ x 4’ 3’ x 5’
 3’ x 10’ 4’ x 6’ 4’ x 10’
Rolls: 3’ x 60’ 4’ x 60’ 6’ x 60’
Thickness: 3/8”

WARRANTY **COLORS**
1 Year Charcoal, Taupe, Gray, Brown



Bi-level pattern with heavy pile surface



Charcoal

Taupe

Gray

Brown

#020/021/022 Graphic Inlay
LOGO MATS | SCRAPER / WIPER

- FEATURES**
- Create a great first impression by adding your logo into our highest-performance scraper/wipers
 - High-definition logo printed on dense nylon fibers and inserted into the mat to create a strong visual message

SPECIFICATIONS
Standard Sizes: 3’ x 5’ 3’ x 10’ 4’ x 6’
 4’ x 10’ 6’ x 10’
Total Customization: Up to 11’9” x 60’
Thickness: 3/8”

WARRANTY **COLORS**
1 Year Anthracite, Beige,
 Blue/Gray, Dark Brown

#010 Flocked Mat
LOGO MATS | WIPER

- FEATURES**
- Promote your business and services thanks to our economical mat with its vibrant colors
 - Flocking process: nylon fibers electrostatically charged and applied to the carpet surface with adhesive

SPECIFICATIONS
Standard Sizes: 2’ x 3’ 3’ x 4’ 3’ x 5’
 3’ x 10’
Total Customization: Max 4-color; 4’ x 6’; 6’ x 20’
 Max logo area 34” x 50”

WARRANTY
1 Year

#050 Embossed Anti-Fatigue Mat
LOGO MATS | ERGONOMIC

- FEATURES**
- Improve the efficiency of your work stations with our embossed ergonomic mats
 - Available with anti-microbial additive.

SPECIFICATIONS
Standard Sizes: 2’ x 3’ 3’ x 4’ 3’ x 5’
 3’ x 10’
 * FLAT PACKED ON SKID, NO CARTONS
Total Customization: Call Customer Service
Lead Time: 3-5 weeks
Thickness: 3/8” Tuff-Spun®
 3/8” or 1/2” Zedlan™ Foam
 high-performance Comfort-King™

WARRANTY **COLORS**
1 Year Tuff-Spun®: Black, Gray
 Comfort-King™: Black, Steel Gray, Royal Blue

#030/035 HD Jet Print™
LOGO MATS | WIPER

- FEATURES**
- Designed to be used indoors in aisles, counters, kiosks, etc.
 - Printed directly on nylon surface

SPECIFICATIONS
Trade Sizes: 2’ x 3’ 3’ x 4’ 3’ x 5’
 3’ x 10’ 4’ x 6’ 4’ x 8’
 5’ x 8’ 6’ x 10’ 6’ x 12’
 Above sizes are trade sizes, see actual sizes in our price list
Total Customization: Length/Width cuts up to 6’ x 40’

WARRANTY
1 Year



Care and Maintenance

Use & Care Instructions – Ergonomic Matting

Regular maintenance of your mats is critical to extend mat life and appearance. It is recommended to develop a regular maintenance schedule. Frequency will depend on traffic and soil conditions.

INITIAL MAT USE

- 1| Within a few days of receipt, rolled mats should be unrolled and laid flat.
- 2| Some rubber mats may have an oily or sticky film on them. This is a releasing agent that is inherent to molded mats, not a defect. Simply wash down with a mild detergent or degreaser to remove this film.
- 3| To store mats, roll them up and lay them in a moderate temperature, dry area. Do not stand on end or crush.

ERGONOMIC / ANTI-FATIGUE MATS – Vinyl

- A| Shake dirt and debris or sweep with a broom daily to remove surface dirt. Sweep the area underneath the mat before replacing it to remove any dirt or debris that could cause premature wear and reduce slip hazards.
- B| Mats can be washed off with a hose or pressure washer or damp mopped with a nonabrasive, water-based detergent. Let the mat dry completely before allowing foot traffic to resume.

ERGONOMIC / ANTI-FATIGUE MATS – Rubber

- A| Shake out dirt and debris by daily flipping the mat over, or by gently sweeping with a broom to remove surface dirt. Sweep the area underneath the mat before replacing it to remove any dirt or debris that could cause premature wear.
- B| Mats can be washed off with a hose or pressure washer or gently scrubbed by hand with a soft brush and a nonabrasive, water-based detergent. Let the mat dry completely before allowing foot traffic to resume. Grease proof or grease resistant mats used in kitchens or oily environments should be cleaned periodically using a water-based detergent and degreaser with a mop or pressure washer to break down excessive grease. **Mats should not be put in a dishwasher.**

IMPORTANT ! Do not use rotary scrubbers, or other mechanical cleaners or scrubbers to clean.

Do not use solvents, harsh detergents, or alkalis directly on the mat. Do not use the mat in areas where these materials are used.

How to Order

With a global distribution network, it's easy to put the strength of our matting solutions to work for you. Visit www.CrownMats.com to find the Crown Matting Technologies distributor/rep nearest you. Or, simply call our customer service team at **800-MAT-LINE (628-5463)**. We welcome the opportunity to discuss our products, take your request for a sample, or answer any questions you may have.

Warranty

STANDARD LIMITED 1-YEAR WARRANTY POLICY

New products are warranted against defects in material and workmanship when maintained as instructed in the Use and Care Instructions included with each product. The obligation under this warranty is limited to the original user and to the replacement, repair, or pro-rated refund of said product. This warranty excludes the costs incurred for the installation of the carpet and/or mat. It remains the responsibility of the owner to carry out an inspection of the product prior to the installation.

This Warranty Is Not Applicable Under The Following Circumstances:

- 1| Improper use, application, installation or cleaning of the product
- 2| Normal wear
- 3| Use of this product for other than its intended purpose
- 4| Lack of proper maintenance as described in the Use and Care Instructions included with each product
- 5| Products that have been altered in any way

If a problem with a product develops during the warranty period, contact your authorized dealer.

Exceptions

Some products may have extended warranty periods. Please refer to the current catalog (available on our website) or pricelist for details.

Please go to www.CrownMats.com for additional warranty information.

Chemical Resistance Chart

Please use this chart as a basic guide. In many cases, resistance to these chemical solutions have been evaluated as a result of intermittent exposure rather than constant exposure. If concerned, please request a sample for testing under your conditions.

Page	Product	acetic acid	acetone	animal fat	brake fluid	butyl alcohol	butyl acetate	chlorine (wet)	cutting oil	formaldehyde	gasoline	hydraulic fluid	hydrochloric acid	MEK	mineral oil	motor oil	nitric acid dilute	sodium hydroxide dilute	sulfuric acid 25%	Toluene	trans fluid	vegetable oil	xylene
6	Alleviator	1	4	1	3	2	4	4	4	2	3	2	1	4	2	2	2	2	1	4	2	1	4
7	Comfort-King	1	4	1	3	2	4	4	4	2	3	2	1	4	2	2	2	1	1	4	2	1	4
19	Deck Plate Runners	1	4	1	2	2	4	3	3	1	3	1	1	4	2	1	1	1	1	4	2	1	4
15	Diamond-Deluxe w/Grit-Safe	2	4	1	1	2	4	4	1	3	2	1	3	4	1	1	4	2	3	4	1	1	4
12	Dura-Step II	2	3	4	4	2	4	4	4	2	4	3	2	4	3	3	4	1	3	4	4	4	4
12	Ergo X-Treme with, w/o Grit	2	4	1	1	1	4	4	1	3	2	1	3	4	1	1	4	2	3	4	1	1	4
8	Industrial Deck Plate	1	4	1	3	2	4	3	4	1	3	2	1	4	2	2	1	1	1	4	2	1	4
22	Mat-A-Dor	2	3	4	4	2	4	4	4	2	4	3	3	4	3	2	4	2	3	4	4	4	4
7	Para-Mount	2	4	1	1	1	4	4	1	3	2	1	3	4	1	1	4	2	3	4	1	1	4
19	Pro-Tekt Runner	1	4	1	3	2	4	3	3	2	3	1	2	4	2	1	2	2	1	4	1	1	4
14	Safe-Flow Plus (NBR)	2	4	1	1	2	4	4	1	3	2	1	3	4	1	1	4	2	3	4	1	1	4
13	Safety-Step Perforated G/P	2	3	2	2	2	4	4	2	3	3	2	3	4	2	2	4	2	3	4	3	3	4
13	Safety-Step Perforated G/R	2	3	3	4	2	4	4	4	3	4	3	3	4	3	3	4	1	3	4	4	4	4
13	Safewalk G/P	2	4	2	3	2	4	4	2	2	3	2	3	4	2	2	4	1	3	4	4	4	4
13	Safewalk G/R	2	3	3	4	2	4	4	3	2	4	3	2	4	3	3	4	1	3	4	4	4	4
14	Safewalk-Light G/R	2	3	3	4	2	4	4	4	3	4	3	3	4	3	3	4	2	3	4	4	4	4
14	Safewalk-Light G/P	2	3	2	3	2	4	4	2	3	3	2	3	4	2	2	4	2	3	4	3	3	4
19	Sta-Kleen Runner	2	4	1	2	1	4	3	2	1	3	1	1	4	2	1	2	2	1	4	2	1	4
8	Spark-Safe	2	3	4	4	2	4	4	4	3	4	3	1	4	3	3	4	1	1	4	4	4	4
10	Tuff-Spun Foot-Lover	1	4	1	3	1	4	4	4	2	3	2	1	4	2	2	2	2	1	4	2	1	4
10	Wear-Bond Tuff-Spun	1	4	1	3	1	4	4	4	2	3	2	1	4	2	2	2	2	1	4	2	1	4
6	Wear-Bond Comfort-King	1	4	1	3	1	4	4	4	2	3	2	1	4	2	2	2	2	1	4	2	1	4
4	Workers-Delight Deck Plate	1	4	1	3	2	4	3	4	2	3	2	1	4	2	2	1	1	1	4	2	1	4
4	Workers-Delight Traction Plus	1	4	1	3	2	4	3	4	2	3	2	1	4	2	2	1	1	1	4	2	1	4
4	Workers-Delight Corrugated Rubber	2	3	4	4	2	4	4	4	3	4	3	1	4	3	3	4	1	1	4	4	4	4
4	Workers-Delight Spark-Safe	2	3	4	4	2	4	4	4	3	4	3	1	4	3	3	4	1	1	4	4	4	4
9	Yoga-Flex	2	3	4	4	2	4	4	4	2	4	3	2	4	3	3	4	1	3	4	4	4	4
	Olefin / polypropylene Surface	1	1	1	1	1	2	4	2	1	2	2	1	2	2	2	1	1	1	3	2	2	4
	Nylon Surface	4	1	1	1	1	1	4	2	2	1	1	4	1	1	1	4	1	4	1	1	1	1
	PET (polyester) Surface	3	2	1	1	2	1	4	2	2	1	1	4	1	1	1	3	1	3	1	1	1	1
	Rubber backing	2	4	4	2	2	4	4	2	2	4	2	2	4	2	2	4	1	3	4	2	2	4
	Vinyl backing	2	4	1	2	1	4	4	3	1	3	1	1	4	2	1	1	1	1	4	1	1	4

KEY

1	Almost no dimension and/or hardness change
2	Minor change in dimension and/or hardness
3	Moderate change in dimension and/or hardness
4	Not Recommended

A/F	Anti-Fatigue
G/P	Grease Proof
G/R	Grease Resistant



T **800.628.5463** F 800.544.2806

T **419.332.5531** F 419.332.4180

2100 Commerce Drive

Fremont, Ohio 43420

U.S.A.

www.CrownMats.com

PRODUCTS AND THEIR RELATED DETAILS ARE SUBJECT
TO CHANGE. PLEASE CONTACT OUR CUSTOMER SERVICE
DEPARTMENT TO OBTAIN CURRENT INFORMATION.